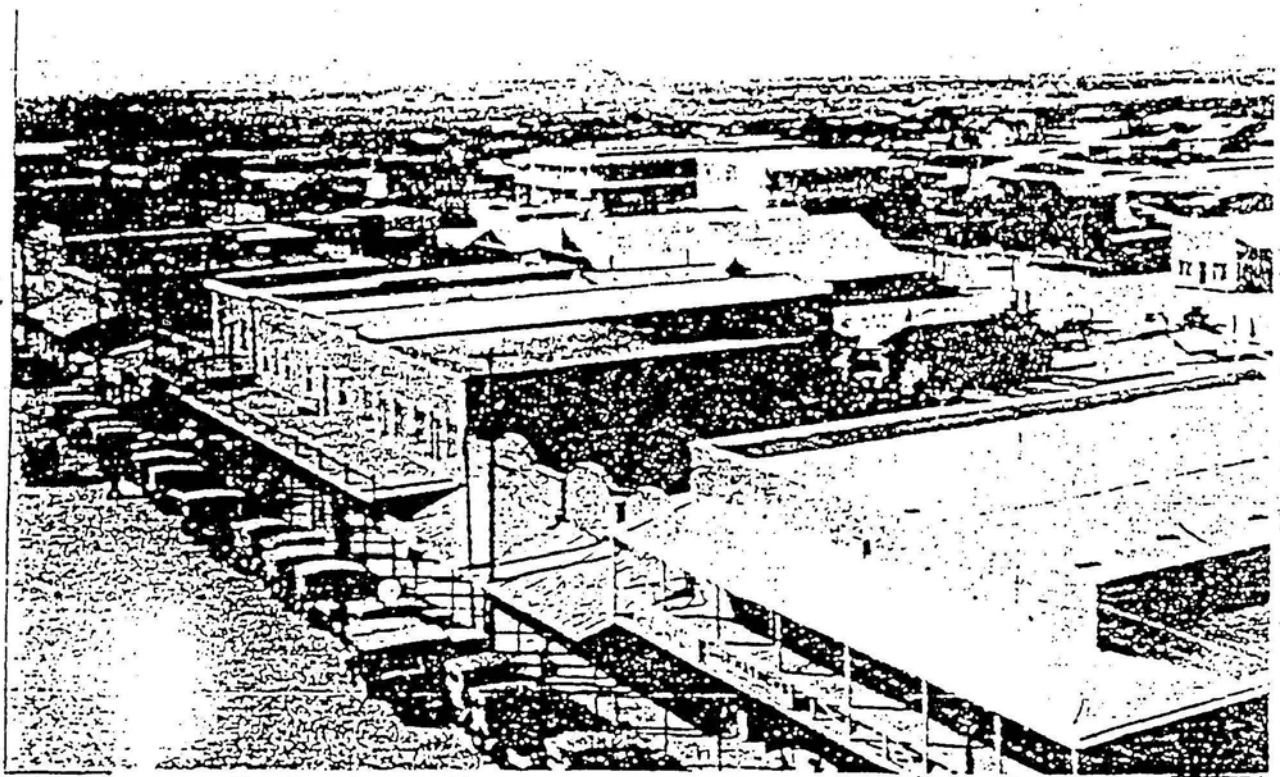


CASA GRANDE

HISTORIC RESOURCES SURVEY



JANUS ASSOCIATES INCORPORATED 2121 SOUTH PRIEST ROAD SUITE 127, TEMPE ARIZONA 85282 U.S.A.

CASA GRANDE

HISTORIC RESOURCES SURVEY

Prepared for

Casa Grande Valley Historical Society

Prepared by

jānusassociates^{llc}

2121 S. PRIEST #127 TEMPE, AZ 85282 (602) 967-7117

James Garrison, Project Coordinator
Cindy L. Myers

"This survey has been funded with the assistance of a matching grant-in-aid from the Department of the Interior, Heritage Conservation and Recreation Service, under provisions of the National Historic Preservation Act of 1966, as amended, and as administered in Arizona by the Arizona State Parks Board through the State Historic Preservation Officer."

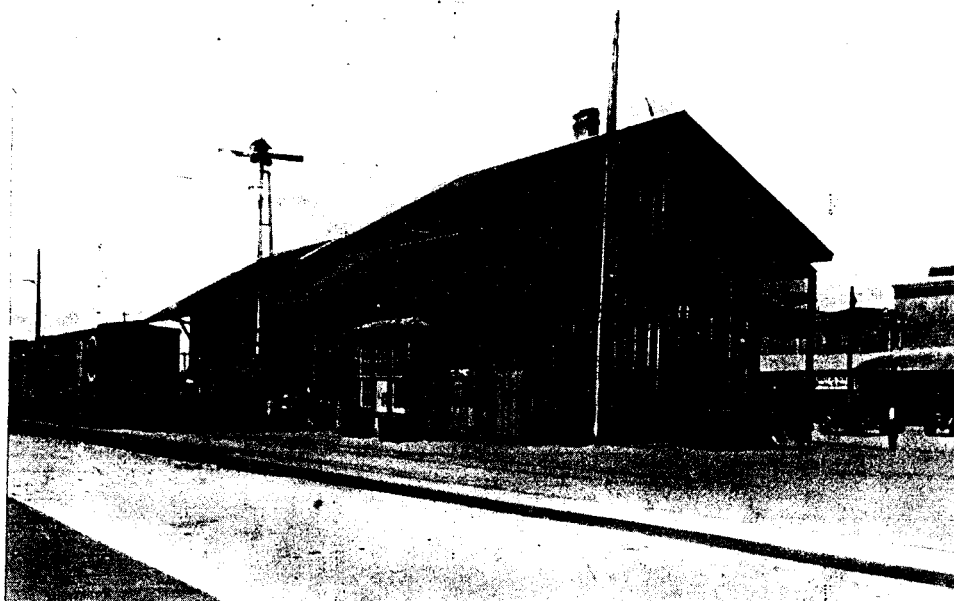
CONTENTS

	<u>Page</u>
Introduction	1
Survey Methodology	4
Field Investigation	4
Historical Research	5
Results of Survey.	7
National Register of Historic Places Criteria for Eligibility	8
Recommendations.	10
Historical Resources Inventory and Map . . .	15
Appendix A: Arizona State Historic Property Inventory Forms .	

*COVER PHOTO Casa Grande Main Street ca. 1916.
Photo courtesy of Casa Grande Valley Historical
Society Museum.*

From a Report to the Legislature on the Resources of Arizona 1884:

"Casa Grande is one of the most prosperous towns in the county. It is situated on the Southern Pacific Railroad, some 60 miles west of Tucson and is the shipping point for Florence, the valley surrounding it, and all the mining regions beyond. It is less than 60 miles from the Quijotoa mines, over a fine natural road, and in all probability will be the point of departure for a large portion of the freight and travel to that camp. Although the principal part of the town was reduced to ashes a few months ago, it is again built up and is steadily growing. The new buildings are mostly of adobe, large, roomy structures. There are a number of stores and forwarding houses, a good hotel, restaurants, saloons, corrals, etc. Population about 500."



SOUTHERN PACIFIC RAILROAD DEPOT. Burned in 1934 and a new depot was constructed in 1935. Photo courtesy of Casa Grande Valley Historical Society Museum.

INTRODUCTION

The following report summarizes the results of more than eight months of field investigation, historical research, interpretation, and evaluation of the historic resources in the city of Casa Grande, Arizona. Sponsored by the Casa Grande Valley Historical Society, the goal of the project was to identify buildings, sites, and objects, within the city limits, eligible for inclusion in the National Register of Historic Places. This report has potential for use as a planning document for local government administrators, elected officials, city planners, and Casa Grande citizens. It provides a historic resource base which can be useful in making decisions that shape Casa Grande's future.

As Casa Grande changes, grows, and prospers, it is critical that a sensitivity toward local heritage be integrated into city and regional planning efforts. Casa Grande's historic resources, in particular those identified in this survey, are a vital link to an understanding of its past, and help interpret the town's sense of time, place and historical development. The concerted effort to conserve important historic resources is necessary as growth and development accelerate.

Casa Grande's heritage is exemplified by its architecture: that physical fabric of the community which transects the entire historical development of the city. Historic buildings may be important as examples of outstanding architectural style, period, or method of construction; for their associations with people or events that are significant to the history of Casa Grande; or by representing the cultural development of the area.



BIEN-MCNATT HOUSE. Built around 1880 and one of the oldest adobe buildings in Casa Grande. Photo courtesy of Casa Grande Valley Historical Society Museum.

The results of the Casa Grande Historical Resource Survey yielded an inventory of historic buildings, sites, and objects with some local architectural or historical merit. The inventory identifies outstanding properties, which by virtue of their national, state, or local significance, appear to potentially qualify for inclusion in the National Register of Historic Places. Also identified are those properties which are deemed potentially eligible at some time in the future.

The National Register is the nation's official listing of historic properties worthy of preservation. Properties may be of local, state, or national importance. Each must possess recoverable integrity and have significance through historical, architectural or archeological associations. National Register designation typically requires that a building be at least 50 years old.

ficance through historical, architectural or archeological associations. National Register designation typically requires that a building be at least 50 years old.

Listing on the National Register affords an historic resource with a measure of protection against adverse effect by federally-supported, and, in Arizona, state-supported, undertakings. It is also a means of establishing public awareness of the historic resources in a community so that local officials and owners may take voluntary actions which enhance and preserve the properties. In addition, certain restoration and rehabilitation work done on National Register buildings in conformance with federal standards qualifies private property owners of income-producing properties for significant tax benefits. Owner-occupied, non-income producing properties listed on the National Register are eligible for a reduced assessed property valuation. Private property cannot be placed on the National Register without consent of the owner, although a determination of eligibility is still made.

Of the 74 resources identified during the survey, 40 appear to be potentially eligible for inclusion in the National Register. Of the remaining 34 properties not considered eligible at this time, several may acquire eligibility within the next ten to fifteen years through age or discovery of significant historical information.

The following sections of this report describe the project's survey methodology, results of the survey, and recommendations for further work. The resource inventory and a referenced map conclude the report. Appendix A consists of Arizona State Historic Property Inventory forms for each potentially eligible property.



WALKER-ARMENTA HOUSE. Built in the late 1870's. One of the earliest buildings remaining in Casa Grande. Photo courtesy of Casa Grande Valley Historical Society Museum.

SURVEY METHODOLOGY

The Casa Grande Historical Resource Survey was conducted from January through September, 1982. The project was sponsored by the Casa Grande Valley Historical Society, which coordinated research efforts by local volunteers. Many hours of time were donated by these researchers. Professional consultation for the survey was provided by Jānus Associates, Inc., an architectural firm from Tempe, Arizona. Work completed during the survey included field investigation, newspaper indexing, title research, photography, oral history, historical photocopying, and searches of the Casa Grande Historical Museum collections.

Funding for the project was provided by a grant from the United States Department of the Interior, under the provisions of the National Historic Preservation Act of 1966, as amended. The grant was administered by the State Historic Preservation Office, Arizona State Parks Board.

Field Investigation

A field survey was conducted by the consultants to identify all potentially significant resources within the survey area, consisting of the city limits of Casa Grande. Sanborn Fire Insurance Company maps of Casa Grande for the year 1922 were used to verify ages and configurations of existing buildings. A 1981 map of Casa Grande was used to survey areas of the city not included in the Sanborn maps. Locations of buildings and notes on physical conditions were plotted on these maps.

Archeological site files were examined to determine if any recorded archeological sites existed. No recorded prehistoric or historic sites were discovered from these searches. Complete archeological survey of the area was not undertaken at this time, although sites possessing potential of yielding information were noted.

A field survey form, developed by Jānus Associates, was completed for each resource identified. These forms record and evaluate the visual characteristics of an inventoried property and its surroundings. Information noted on the form included general data such as the address and present use of the resource; data regarding a property's integrity, such as amount of modification and state of deterioration; and data pertaining to the

significance of a property, related to location, design, setting, materials, workmanship, feeling and association of the resource.



JOHN C. LOSS HOUSE. ca. 1892. Fannie Meehan of a prominent early Casa Grande family is standing in front. Photo courtesy of Casa Grande Valley Historical Society Museum.

Historical Research

An historic property file was prepared for each of the seventy-four properties identified in the field survey. All research data compiled on each property, including historic and current photographs, were collected in these property files.

One of the major research tasks involved newspaper indexing of the Casa Grande Valley Dispatch from 1890 to 1934. Volunteer readers were asked to transcribe any article that identified key people associated with specific buildings, described construction or renovation activities, or established the relationship between buildings and their respective uses. They were also to select articles on building technology, noteworthy events, social and political activity, economic activity, and biographical information. All articles were to be copied

verbatim from the newspaper onto three by five cards, and reference made to day, month, year, column, and page. A card file was established from which cards could be copied for inclusion in particular property files.

Many years of the newspaper had already been indexed as part of an ongoing Historical Society project. These indexes were examined for pertinent articles which were then copied and added to the property files. As additional newspaper years were read, relevant articles from those years were added to the property files. The creation of the indexes and card files of newspaper articles has provided a valuable resource for both museum work and historical society use and for Casa Grande citizens seeking information about their properties or the city's history.

Examination of this historical data led to a refinement of the initial preliminary inventory of 4 identified resources, resulting in a research inventory of forty-nine properties. Intensive research was undertaken by volunteers to complete a history of each of these properties. The Historical Society's historical, photographic, and oral history archives were searched and relevant information copied and added to each property file. Historical photographs were reproduced for the files. Chains of title with legal information were prepared for each property. Titles were searched to 1888, the present limitation of local track books. Three or four current black and white photographs were also added to each file.

Volunteers were trained in interviewing techniques and interviews were conducted with Casa Grande citizens knowledgeable about particular properties. Interviews proved valuable in providing information about properties that was unavailable through other research procedures. Interviews also provided access to privately owned historical photographs which were then copied and added to the property files.

Upon completion of this phase of intensive research, property files were examined for completeness of data to substantiate and support the significance and integrity of the resource. Each resource was evaluated, following National Register criteria, and forty were selected as potentially eligible for the National Register. Arizona State Historic Property Inventory forms were completed for each of these 40 resources, and are included in Appendix A.

RESULTS OF SURVEY

Completion of the resource survey to date has resulted in a substantial body of research about local history and the identification of buildings, sites and objects in Casa Grande with potential for inclusion in the National Register. The forty properties selected for the final inventory were chosen for their architectural design and character, construction technique or material, association with persons of recognized historic importance to Casa Grande, or for their potential of yielding information important to Casa Grande's history.

Of the remaining thirty-four properties, four are buildings of recent construction which may be eligible within ten to fifteen years, and five are properties about which no historical information was readily available. The remaining twenty-five properties did not possess sufficient integrity or significance to warrant inclusion in the final inventory of potentially eligible resources.

All properties are listed in the Historical Resources Inventory in this report. Properties potentially eligible for the National Register are located on the attached map and are recorded on Arizona State Historic Property Inventory Forms. Properties not considered eligible are so designated on the Historic Resources Inventory. The Peart Adult Center, originally considered an eligible property, was impacted during the survey by extensive remodeling by the City. This resource has thereby lost its integrity and was removed from the inventory of potentially eligible buildings.

NATIONAL REGISTER OF HISTORIC PLACES
CRITERIA FOR ELIGIBILITY

The quality of significance in American history, architecture, archeology, and culture is present in districts, sites, buildings, structures, and objects that possess integrity of location, design, setting, materials, workmanship, feeling, and association, and:

- A. that are associated with events that have made a significant contribution to the broad patterns of our history; or
- B. that are associated with the lives of persons significant in our past; or
- C. that embody the distinctive characteristics of a type, period, or method of construction, or that represent a significant and distinguishable entity whose components may lack individual distinction; or
- D. that have yielded, or may be likely to yield, information important in prehistory or history.

Ordinarily cemeteries, birthplaces, or graves of historical figures, properties owned by religious institutions or used for religious purposes, structures that have been moved from their original locations, reconstructed historic buildings, properties primarily commemorative in nature, and properties that have achieved significance within the past fifty years shall not be considered eligible for the National Register. However, such properties will qualify if they are integral parts of districts that do meet the criteria or if they fall within the following categories:

- A. a religious property deriving primary significance from architectural or artistic distinction or historical importance; or
- B. a building or structure removed from its original location but which is significant primarily for architectural value, or which is the surviving structure most importantly associated with a historic person or event; or
- C. a birthplace or grave of a historical figure of outstanding importance if there is no other appropriate site or building directly associated with his productive life; or

- D. a cemetery that derives its primary significance from graves of persons of transcendent importance, from age, from distinctive design features, or from association with historic events; or
- E. a reconstructed building when accurately executed in a suitable environment and presented in a dignified manner as part of a restoration master plan, and when no other building or structure with the same association has survived; or
- F. a property primarily commemorative in intent if design, age, tradition, or symbolic value has invested it with its own historical significance; or
- G. a property achieving significance within the past fifty years if it is of exceptional importance.

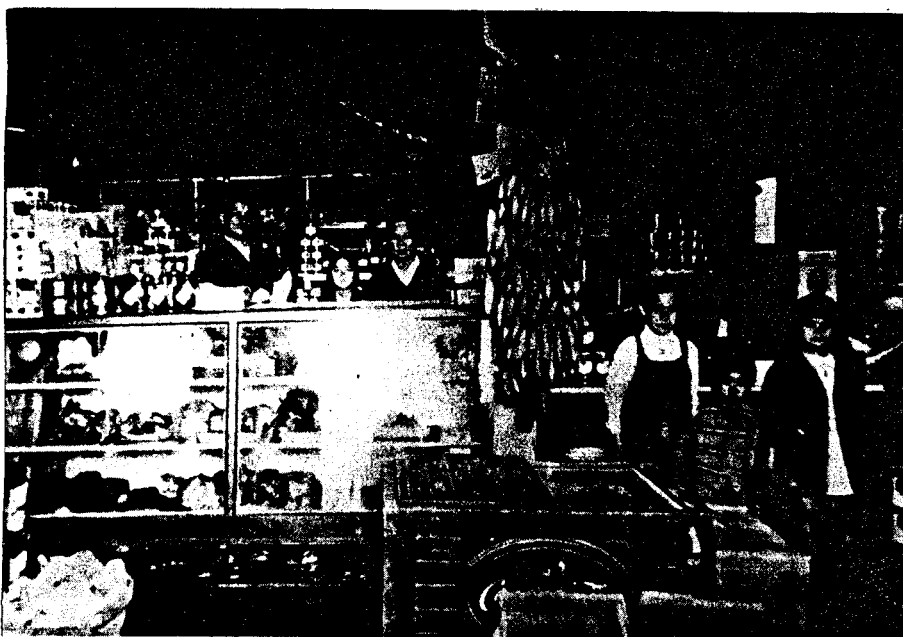


WARD'S VARIETY STORE AND SANITARY MEAT MARKET.
Built in 1920 at 112 North Sacaton. Photo
courtesy of Casa Grande Valley Historical Society
Museum.

RECOMMENDATIONS

With the completion of the Casa Grande Historical Resource Survey, the Casa Grande Valley Historical Society is presented with several projects to pursue. These include preparation of National Register nominations for eligible properties, recognition of endangered historic properties, preparing for documentation of properties which may become eligible for National Register inclusion in the future, and cooperation with the city of Casa Grande in planning for the best use of these historic resources.

The asterisked properties listed in the attached Casa Grande Historical Resources Inventory possess the potential to qualify for inclusion on the National Register. Although research is relatively complete for several of these properties, more in-depth research will be required to substantiate historical evidence for the majority of them. No historic districts with sufficient architectural or historical integrity to warrant a National Register nomination were identified. Two of the resources, the Casa Grande Woman's Club and the Stone Church have already been listed on the National Register.



MERCANTILE STORE INTERIOR. Don Chun Wo, a local merchant, and his family in their store at 121 West Main Avenue. Photo Courtesy of Casa Grande Valley Historical Society Museum,

Those resources not asterisked are not considered potentially eligible for the National Register for several reasons: (1) loss of integrity, (2) a better example of that particular architectural type is found elsewhere in the city, (3) the building is too recent to meet the Register's 50-year standard, or (4) insufficient information about historical documentation or association exists. These designations are noted for each resource on the inventory.

Of the forty eligible properties listed in the Historical Resource Inventory, the following twenty have been selected as having sufficient integrity and significance to possess the greatest likelihood of National Register eligibility. Further research by the Historical Society could result in preparation of National Register nominations for these properties.

CG-101	702 East Main Avenue--Denton House
CG-105	107 West Main Avenue--John C. Loss House
CG-106	115 West Main Avenue--Shonessy House
CG-107	121 West Main Avenue--Shonessy Building/Don Chun Wo Store
CG-111	210 South Washington--Walker/Armenta House
CG-114	310 West Main Street--Souva/Cruz House
CG-115	Southern Pacific Railroad Depot
CG-116	200 West Main Street--Cruz Trading Post
CG-117	121 West Main Street--Armenta Building
CG-119	200 West 1st Street--Meehan/Gaar House
CG-120	208A West 1st Street--Bien/McNatt House
CG-122	310 West 1st Street--Judge William T. Day House
CG-126	North Maricopa and 3rd Street--Gus Kratzka House
CG-128	223 West 10th--C. J. "Blinky" Wilson House

- CG-134 300 East 8th Street--Fisher Memorial Home
- CG-144 929 North Lehmberg--Dr. H. B. Lehmberg House
- CG-146 Casa Grande Union High School main building
and Gymnasium
- CG-147 119 Florence Street--Pioneer Market
- CG-151 511 West 2nd--Blinky Wilson's "S. S. Blinky Jr."
- CG-173 West Main Street--Archeological site (Block 13)

Several of the buildings identified in the survey as potentially eligible are in deteriorating condition and can be considered endangered. Recognition of these endangered resources is imperative to their preservation, particularly as several of these buildings are among the most historically significant resources listed above. The endangered buildings are:

- CG-101 702 East Main Avenue--Denton House
- CG-104 201 West Main Avenue--Gould's Hotel/Casa Grande
Hotel
- CG-107 121 West Main Avenue--Shonessy Building/Don Chun
Wo Store
- CG-111 210 South Washington--Walker/Armenta House
- CG-114 310 West Main Street--Souva/Cruz House
- CG-117 121 West Main Street--Armenta Building
- CG-125 309 West 8th--Two story commercial adobe building
in the rear

The Historical Society's continuing acquisition of archival material may lead to an accumulation of evidence supporting the National Register nomination of resources about which too little information is available at this time. In particular, the following five properties would be worthy of further investigation:

- CG-132 519 East 3rd Street
- CG-154 200 North Brown

CG-164 909 East Lehmberg--Dr. James T. O'Neil House
 CG-166 201 South Washington--Elliott Electric Building
 CG-174 708 West Gila Bend Highway--Sunset Court

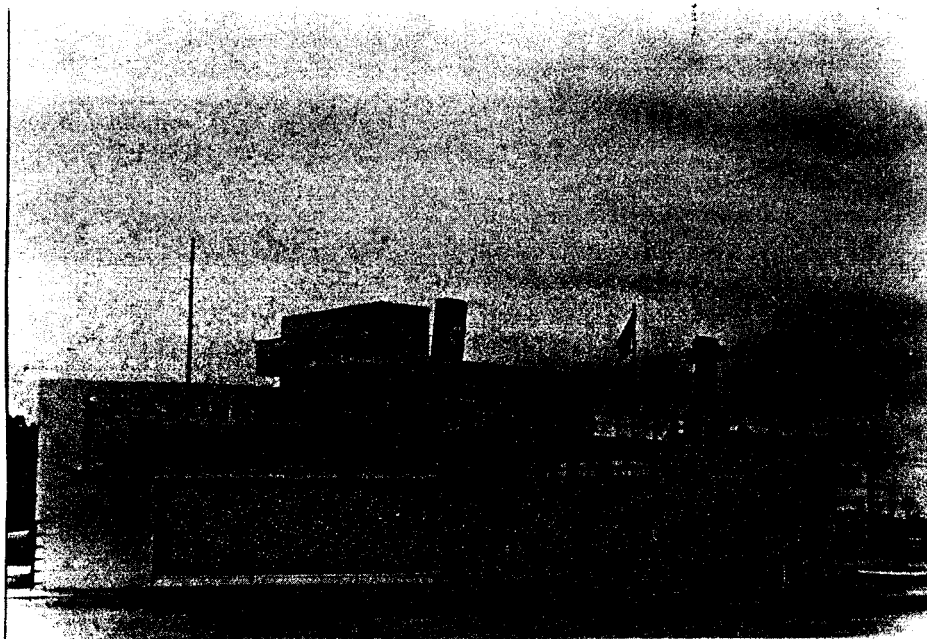
In addition, four properties have been recognized as having historical or architectural merit but are of too recent construction to allow nomination. These properties may be eligible within ten to twenty years and should be investigated when reaching fifty years of age.

CG-140 Mision Bautista--c. 1949, cast-in-place concrete
 CG-145 814 Lehmberg--Octagon House--c. 1937
 CG-149 113-117 East 4th Street--c. 1938--finest example of a series of cast-in-place concrete commercial buildings built in Casa Grande during the late 1930s to late 1940s--several other buildings of this construction type and period may merit nomination.
 CG-163 209 West 11th Street--c. 1942--rammed adobe construction

An archeological site possessing a high degree of potential for yielding information important to the city's history was selected. This site encompasses the entire south half of Block 13 excluding Lots 18, 19, 20, and the east half of Lot 17. Lots 13, 14, 15, 16, 21, and the west half of Lot 17 comprise the archeological site. This site from the 1880s through the 1950s was the heart of Casa Grande's business district. Repeated episodes of building, destruction by fire, and rebuilding have imbued the site with a complex history of construction techniques, architectural styles, commercial functions, and human activity. All of the lots included in the site have been cleared. Ground surfaces are rubble-strewn with artifacts and building remnants are visible. This once active area in Casa Grande is unique for its potential to yield information important to the city's history.

Through close cooperation with the city of Casa Grande, the Casa Grande Valley Historical Society can endeavor to preserve the best of the city's architectural and

historical heritage. The resources documented during this survey exemplify the physical development and elucidate the historical development of the town. Community awareness of the remaining historical and architectural resources is the most valuable asset in their preservation. Continuing efforts of the Historical Society will maintain and direct this awareness.



SS BLINKY JR. BUILDING. ca. 1947. Designed by an inmate of the Arizona State Prison for Blinky's son who returned from World War II service on a ship. Photo courtesy of Casa Grande Valley Historical Society Museum.

HISTORICAL RESOURCES INVENTORY AND MAP

Numbers on the Historic Survey Map mark the locations of forty historic resources featured in this report. The names and addresses of specific buildings may be found by consulting the Historical Resources Inventory below. Asterisked numbers represent the potentially eligible properties which are referenced on the map. For further information about the asterisked properties, refer to the appropriate inventory form. These inventory forms are organized in sequential order by inventory number in APPENDIX A. The inventory number reference for each building is located in the upper right portion of the inventory form, above the photograph.

CASA GRANDE HISTORICAL RESOURCES INVENTORY

*CG-101	702 East Main Avenue--Denton House
CG-102	230 Cedar--insufficient information available
CG-103	115 Date--better example available
*CG-104	201 West Main Avenue--Gould's Hotel/Casa Grande Hotel
*CG-105	107 West Main Avenue--John C. Loss House
*CG-106	115 West Main Avenue--Shonessy House
*CG-107	121 West Main Avenue--Shonessy Building/Don Chun Wo Store
CG-108	219 East 1st Avenue--insufficient information available
CG-109	Corner Washington and West 1st Avenue--too recent
CG-110	200 South Washington--better example available
*CG-111	210 South Washington--Walker/Armenta House
CG-112	317 South Florence--insufficient information available

*CG-113 215 North Picacho--St. Anthony's Church/
Murphy Hall
 *CG-114 310 West Main Street--Souva/Cruz House
 *CG-115 Southern Pacific Railroad Depot
 *CG-116 200 West Main Street--Cruz Trading Post
 *CG-117 121 West Main Street--Armenta Building
 CG-118 corner Picacho and Main Street--too recent
 *CG-119 200 West 1st Street--Meehan/Gaar House
 *CG-120 208A West 1st Street--Bien/McNatt House
 *CG-121 204 North Sacaton--Sacaton Hotel/Sacaton
Apartments
 *CG-122 310 West 1st Street--Judge William T. Day
House
 CG-123 820 North Pinal--loss of integrity
 CG-123A 324 West 8th--better example available
 CG-124 323 West 8th--loss of integrity
 *CG-125 Two story commercial adobe building behind
309 West 8th
 *CG-126 North Maricopa and 3rd Street--Gus Kratzka
House
 CG-127 806 North Center--better example available
 *CG-128 223 West 10th--C. J. "Blinky" Wilson House
 CG-129 412 West 11th Street--better example available
 CG-130 415 East 4th Street--better example available
 *CG-131 515 East 3rd Street--Stone Bungalow
 CG-132 519 East 3rd Street--insufficient information
available
 *CG-133 301 North Picacho--Johnson's Grocery Store
 *CG-134 300 East 8th Street--Fisher Memorial Home

CG-135	904 East 8th Street--better example available
CG-136	317 East 8th Street--too recent
*CG-137	211 North Cameron--Earl Bayless House
*CG-138	221 North Cameron--Wilbur Bayless/Grasty House
CG-139	217 Brown--better example available, more information needed
CG-140	100 North Brown--too recent
CG-141	901 North Brown--better example available
*CG-142	901 East Morrison--White House
CG-143	928 North Kadota--better example available
*CG-144	929 North Lehmberg--Dr. H. B. Lehmberg House
CG-145	814 North Lehmberg Avenue--too recent
*CG-146	Casa Grande Union High School main building and Gymnasium
*CG-147	119 Florence Street--Pioneer Market
*CG-148	119 Florence Street--Stone Warehouse
CG-149	113-117 East 4th Street--too recent
*CG-150	Paramount Theatre
*CG-151	511 West 2nd--Blinky Wilson's "S. S. Blinky Jr."
CG-152	Peart Adult Center--impacted by recent City remodeling
CG-153	West 2nd between Maricopa and Sacaton--too recent
CG-154	200 North Brown--insufficient information available
CG-155	309 West 8th--insufficient information available
CG-156	412 West 2nd--better example available

CG-157 201 West 9th--insufficient information available

CG-158 111 East 9th--insufficient information available

CG-159 714 North Center--better example available

*CG-160 Highway 84 Underpass

*CG-161 114 West Main Street--Prettyman's Meat Market/Brigg's Jeweler

CG-162 800 North Park--Cactus Garden--insufficient information available

CG-163 209 West 11th--too recent, rammed adobe

CG-164 909 North Lehmborg--insufficient information available

*CG-165 905 North Lehmborg

CG-166 Elliott Electric Building, 201 S. Washington--insufficient information available

*CG-167 Highway 93--Sheafe House/Casa Sahuaro

*CG-168 118 North Sacaton--Mission Revival Shop

*CG-169 112 North Sacaton--Mission Revival Shop/Ward's Variety Store

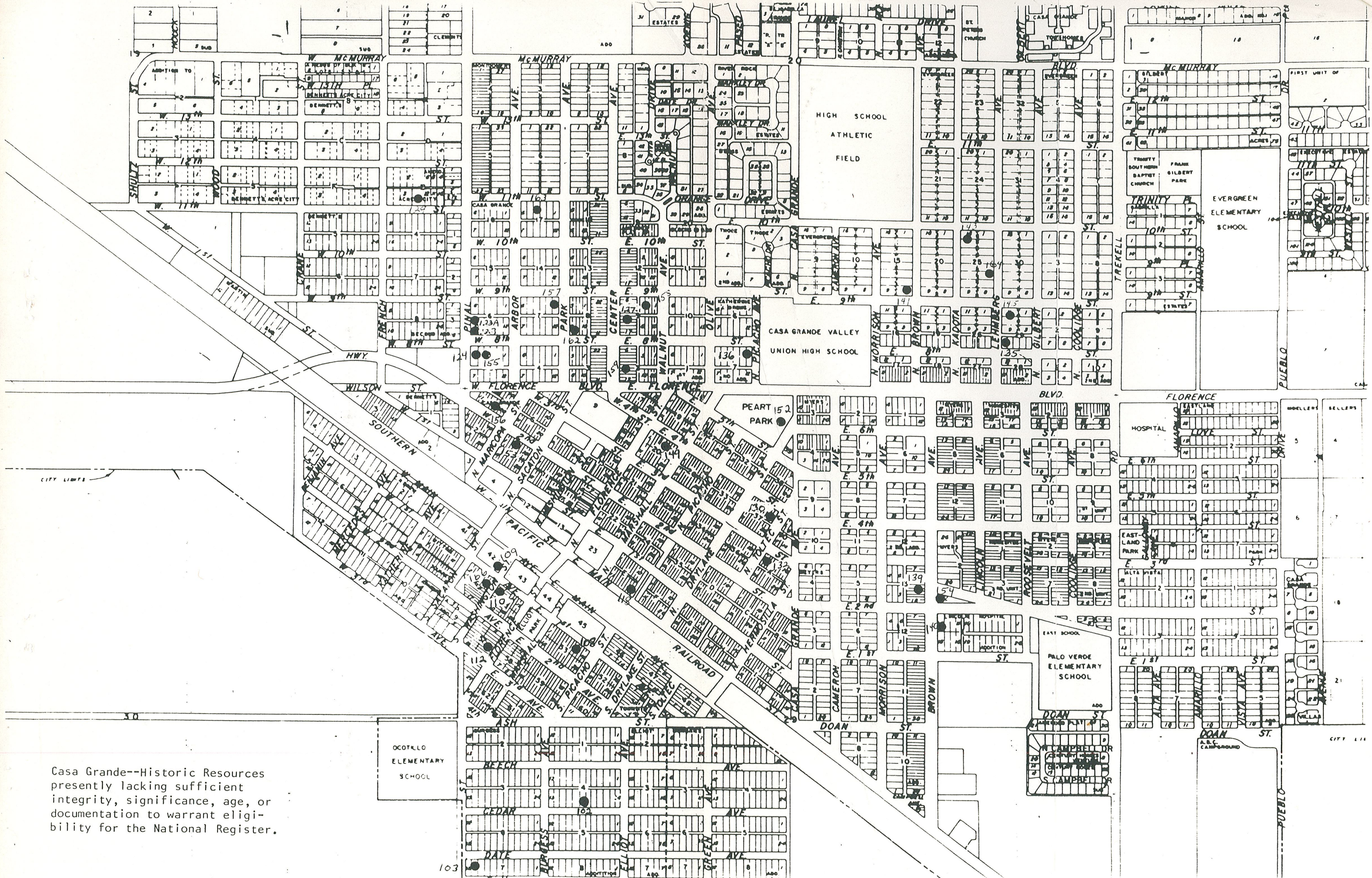
*CG-170 114 East Florence Blvd.--Vasquez House

*CG-171 Florence Blvd. and North Park Avenue--Stone Presbyterian Church/Casa Grande Valley Historical Society (listed on the National Register)

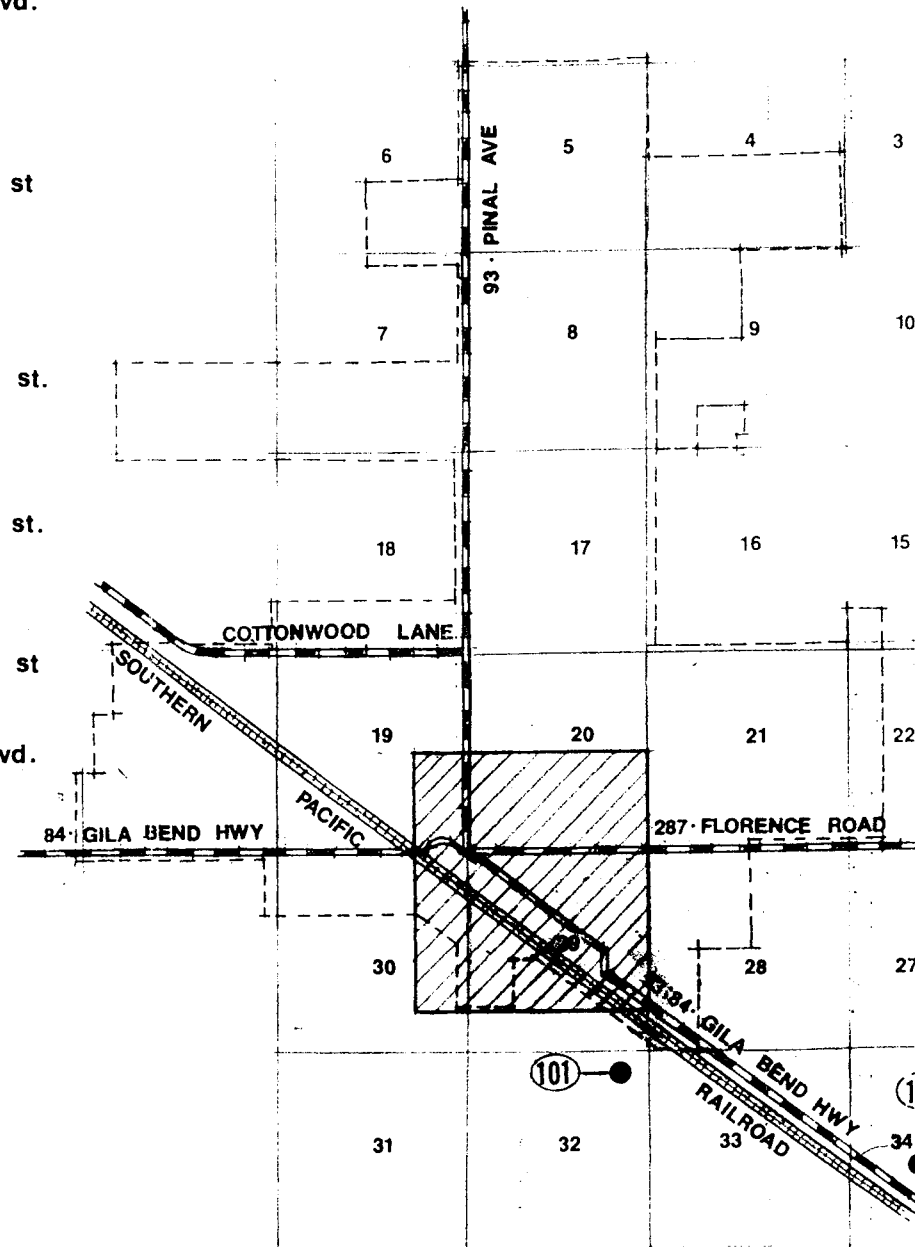
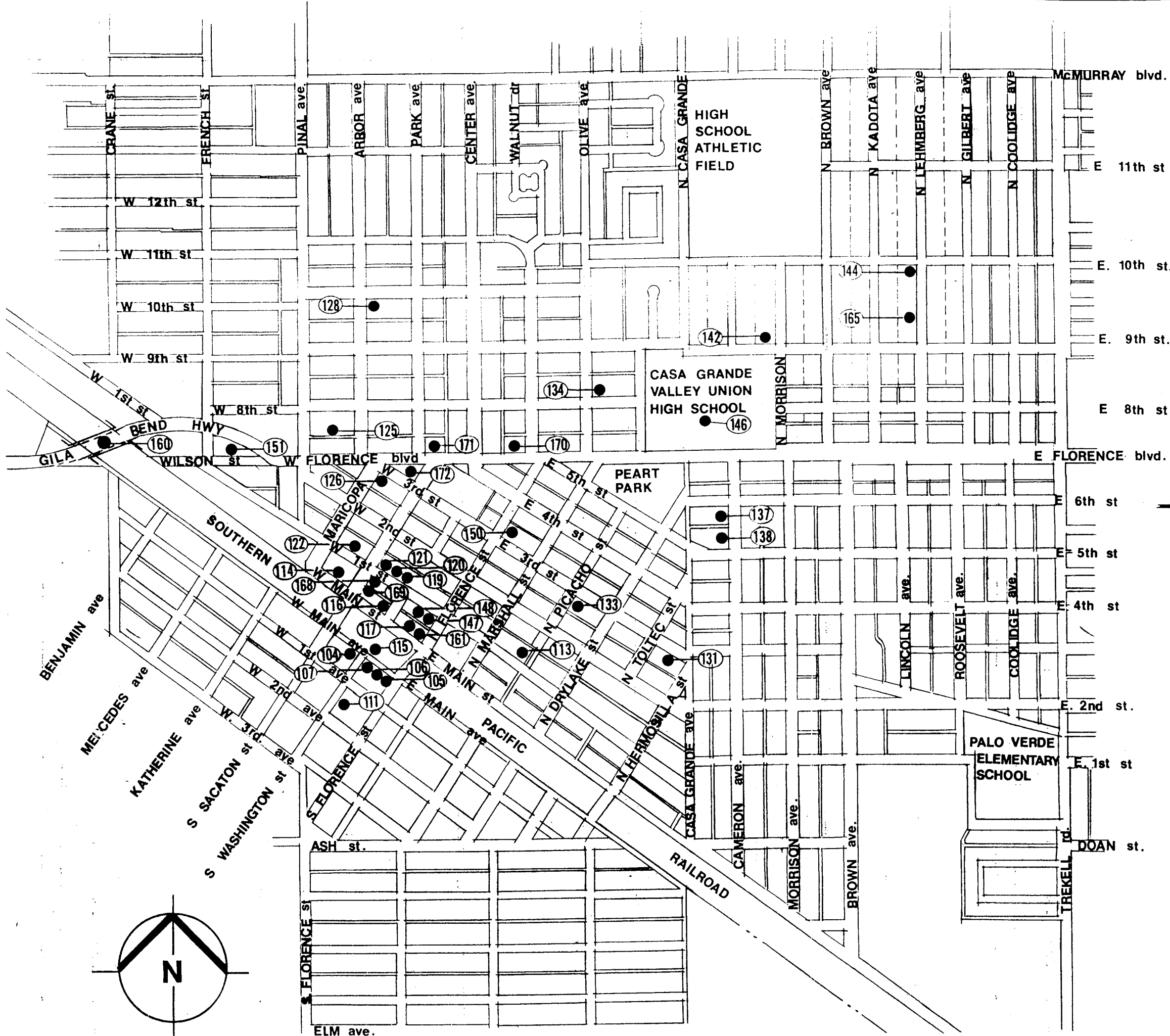
*CG-172 407 North Sacaton--Casa Grande Woman's Club (listed on the National Register)

*CG-173 West Main Street--Archeological site (Block 13), no photo available

CG-174 708 West Gila Bend Highway, Sunset Court--insufficient information available, no photo available



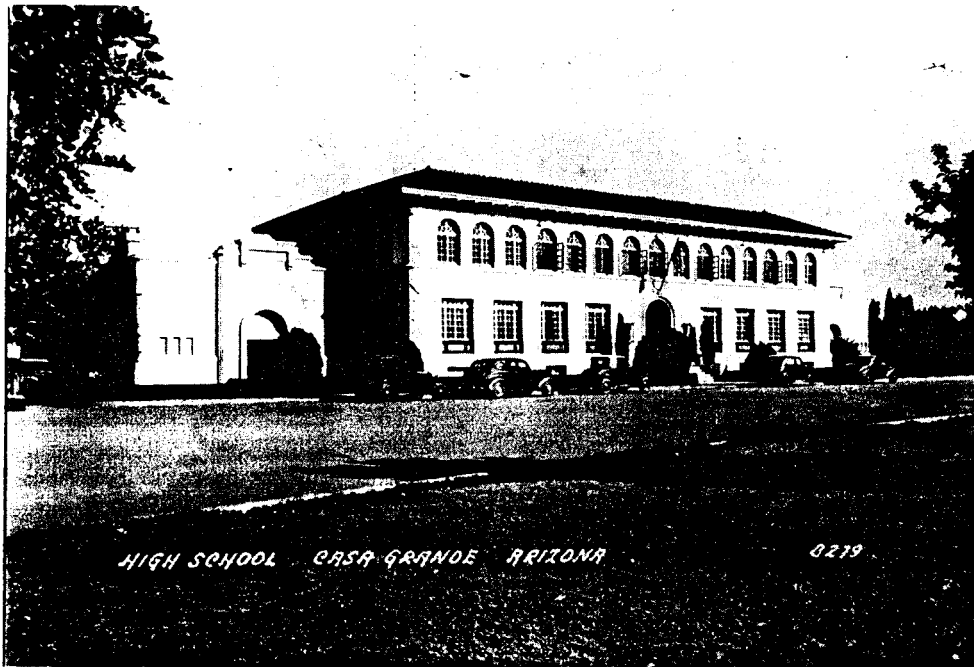
Casa Grande--Historic Resources presently lacking sufficient integrity, significance, age, or documentation to warrant eligibility for the National Register.



CASA GRANDE
 PINAL COUNTY ARIZONA

APPENDIX A

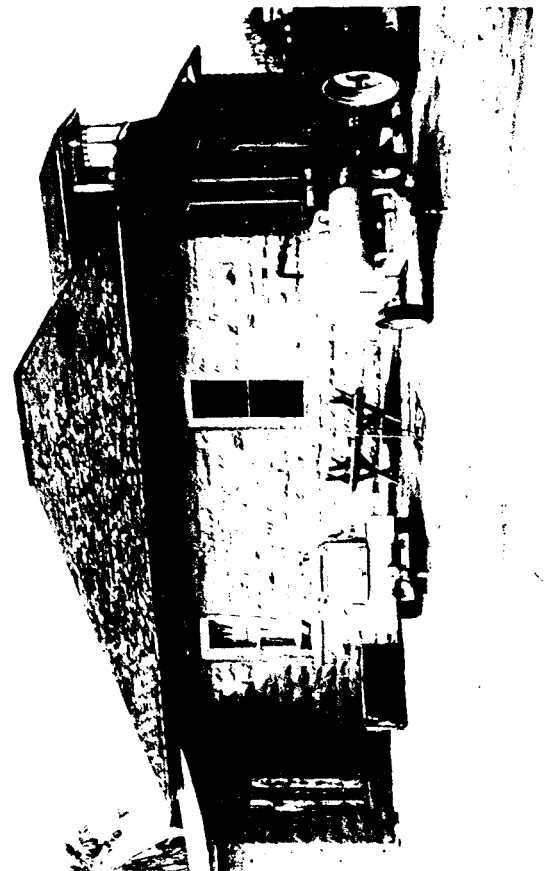
ARIZONA STATE HISTORICAL PROPERTY INVENTORY FORMS



*CASA GRANDE VALLEY UNION HIGH SCHOOL ca. 1921.
One of Casa Grande's landmarks. Photo courtesy of
Casa Grande Valley Historical Society Museum.*

ARIZONA STATE HISTORIC PROPERTY INVENTORY

HISTORIC PROPERTY NAME Denton House		COUNTY Pinal County	INVENTORY NO. CG-101
COMMON PROPERTY NAME		QUAD/COUNTY MAP	
PROPERTY LOCATION-STREET & NO. 702 East Main			
CITY, TOWN/VICINITY OF Casa Grande		ASSESSOR'S PARCEL NO 507-06-116	
OWNER OF PROPERTY Ida Brannum		PHONE	
STREET & NO./P.O. BOX 813 North Coolidge			
CITY, TOWN Casa Grande, Arizona		STATE Arizona	
FORM PREPARED BY Janus Associates, Inc.		DATE 9/82	
STREET & NO./P.O. BOX 2121 S. Priest Rd.		Suite 127 PHONE 967-7117	
CITY, TOWN Tempe,		STATE Arizona	
PHOTO BY Casa Grande Survey Volunteer		DATE 6/82	
VIEW Looking west			
HISTORIC USE Residence			
PRESENT USE Vacant		ACREAGE	
ARCHITECT/BUILDER			
CONSTRUCTION/MODIFICATION DATES			



PHYSICAL DESCRIPTION

The Denton House is a square single-story, symmetrical building with a truncated pyramidal shingled roof featuring a hipped dormer on the front (east) slope. The dormer opens onto a small balcony with turned wood posts supporting the hipped roof and decorative open frieze between the posts. The house has double wall construction. The inner walls are of rubble with mud mortar. The sandstone walls are coursed quarry-faced ashlar. The main facade entry is a single-leaf six-light wood door with sidelights and a three-light transom. Paneled wood infills the lowest portion of the sidelights. Four double-hung, one over one light windows are placed individually across the main facade; two double-hung windows are on each of the side facades. An early lean-to addition at the southwest corner of the house is also faced with the same sandstone. Portions of the sandstone facing on the east facade have fallen away. The chimney and balustrade around the top of the truncated roof have been removed. The house is in a deteriorated condition but can be restored. It's style has a noted Colonial Revival influence.

STATEMENT OF SIGNIFICANCE/HISTORY

The Denton House is significant as the home built by locally prominent attorney Robert E. Denton around 1900. Denton opened a law office in Casa Grande. He later served as a bank director and was elected to the Pinal County Board of Supervisors.

Although in a deteriorated state, this house retains architectural significance because of its unique double-wall method of construction. The double wall of mud-mortared fieldstone faced with ashlar sandstone makes a unique contribution to examples of construction methods in the area. Although missing, the balustraded deck surrounding the truncated pyramidal roof and balustraded front veranda are restorable.

SOURCES OF ABOVE INFORMATION/BIBLIOGRAPHY

Casa Grande Valley Historical Society newspaper index files
Casa Grande Valley Historical Society photo and history files
Interview: Shelby Brannum--August 31, 1982

GEOGRAPHICAL DATA/LEGAL DESCRIPTION/VERBAL BOUNDARY DESCRIPTION

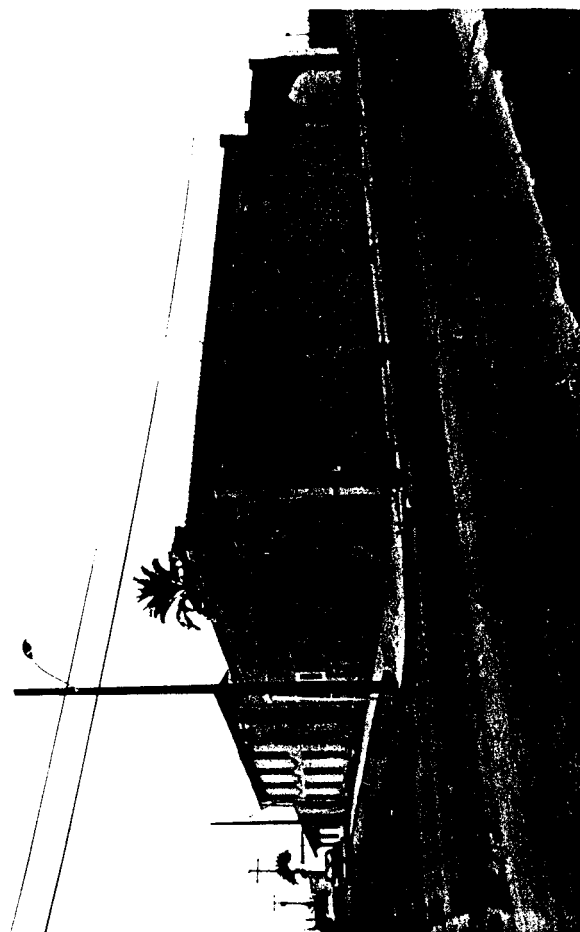
portion of the NW $\frac{1}{4}$ SE $\frac{1}{4}$ South of the railroad Sec. 29, T6S, R6E,
16 acres

GENERAL COMMENTS/FUTURE PLANS FOR PROPERTY

ARIZONA STATE HISTORIC PROPERTY INVENTORY

CG-104

HISTORIC PROPERTY NAME Casa Grande Hotel	
COMMON PROPERTY NAME Casa Grande Hotel/Gould Hotel	
PROPERTY LOCATION-STREET & NO. 201 West Main Avenue	
CITY,TOWN/VICINITY OF Casa Grande	ASSESSOR'S PARCEL NO. 507-07-241
OWNER OF PROPERTY Wm H. & C. Courtright	PHONE
STREET & NO./P.O. BOX 201 West Main Avenue	
CITY,TOWN Casa Grande	STATE Arizona
ZIP 85222	
FORM PREPARED BY Janus Associates Inc.	DATE 9/82
STREET & NO./P.O. BOX 2121 S. Priest Suite 127	PHONE 967-7117
CITY,TOWN Tempe,	STATE Arizona
ZIP 85282	
PHOTO BY Janus Associates Inc.	DATE Feb. 1982
VIEW looking southwest	
HISTORIC USE hotel	
PRESENT USE multiple residence	ACREAGE less/one
ARCHITECT/BUILDER	
CONSTRUCTION/MODIFICATION DATES Built before 1898 1929 2 story, concrete addition built 1913, minor modifications--1914, 1915,	



PHYSICAL DESCRIPTION

The Casa Grande Hotel was originally a single story, double bay, adobe commercial building, and was consolidated into a single-function hotel before 1906. The exterior has been modified. Although the original arcade is present, the angled brackets have been made into arches. The entire arcade and north and east building walls have been covered with stucco; the west wall is exposed adobe. The sleeping porch over the arcade has been replaced with a red tile roof. The low-pitched gable roof surmounting the main building is covered with metal and concealed on the east and north sides with a parapet trimmed with red tile.

A two story, cast-in-place, concrete addition at the south end of the building has a medium-pitched gable roof and is clad with stucco. The eight windows on the east facade (the only visible facade) are double hung rectangular windows discretely located.

STATEMENT OF SIGNIFICANCE/HISTORY

The Gould Hotel/Casa Grande Hotel is noteworthy as the earliest remaining hotel in Casa Grande. The building fulfilled this important community function over a long period of time and is a good example of an adobe commercial building. Initially the hotel served railroad passenger traffic. From the 1930s through 1961, the hotel's restaurant and banquet room served monthly luncheons to the city's civic organizations. Prominent Arizona residents, including Governor G. W. P. Hunt, were frequent guests. The hotel was also noted for its fine restaurant.

The hotel, originally a five-room adobe rooming house, was purchased in 1909 by William Gould, a local rancher, from John Riess. Over the next two years, Gould added eight more rooms, using adobe construction. Guests frequently slept on cots in the open air above the porch. In 1913 Gould built a two-story, concrete addition at the rear of the hotel, which is now bridged to the hotel by a third addition. Gould died in 1916, and the hotel was operated by his daughter until 1961. The exterior was modified with Mission Revival details c. 1930.

Several interior features have been preserved, including the pressed tin ceilings and wood desk in the lobby, and original light fixtures and door hardware.

SOURCES OF ABOVE INFORMATION/BIBLIOGRAPHY

Casa Grande Valley Historical Society newspaper index file
Casa Grande Valley Historical Society history and photo files
Interview: Mrs. William Courtright--September 3, 1982

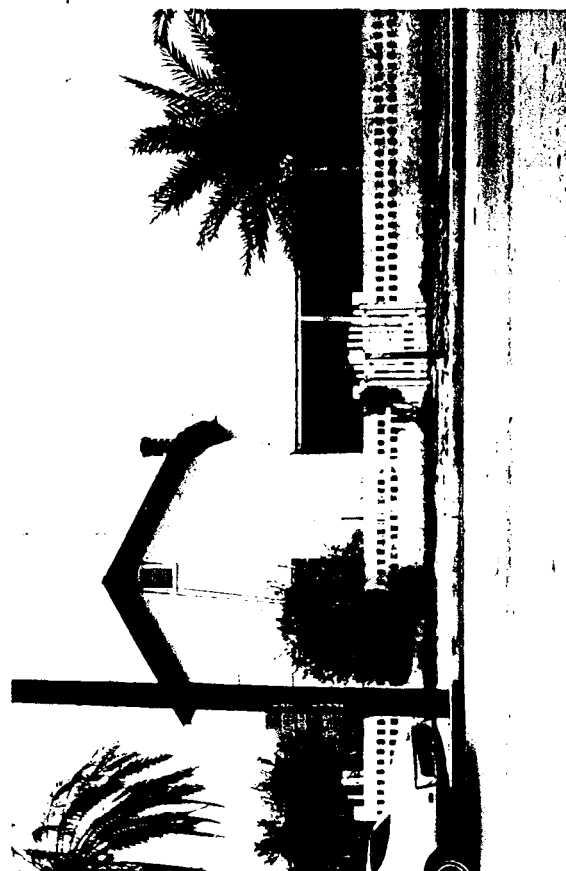
GEOGRAPHICAL DATA/LEGAL DESCRIPTION/VERBAL BOUNDARY DESCRIPTION

72' x 170' x 66' x 170' on East End of Block 42 (Lot A),
Casa Grande Townsite

GENERAL COMMENTS/FUTURE PLANS FOR PROPERTY

ARIZONA STATE HISTORIC PROPERTY INVENTORY

HISTORIC PROPERTY NAME John C. Loss House		COUNTY Pinal County	INVENTORY NO. CG-105
COMMON PROPERTY NAME Loss House		QUAD/COUNTY MAP	
PROPERTY LOCATION-STREET & NO. 107 West Main Avenue			
CITY, TOWN/VICINITY OF Casa Grande		ASSESSOR'S PARCEL NO. 507-07-243	
OWNER OF PROPERTY David Obregon		PHONE	
STREET & NO./P.O. BOX 107 West Main Avenue			
CITY, TOWN Casa Grande,		STATE Arizona	ZIP 85222
FORM PREPARED BY Janus Associates Inc.		DATE 9/82	
STREET & NO./P.O. BOX 2121 S. Priest Suite 127		PHONE 967-7117	
CITY, TOWN Tempe,		STATE Arizona	ZIP 85282
PHOTO BY Janus Associates Inc.		DATE Feb. 1982	
VIEW looking south			
HISTORIC USE residence			
PRESENT USE residence		ACREAGE less/one	
ARCHITECT/BUILDER			
CONSTRUCTION/MODIFICATION DATES built pre-1892 (c 1880)			



PHYSICAL DESCRIPTION

The John C. Loss House is an L-shaped structure of stucco cladding. The one and one-half story adobe wing with a gabled roof is intersected by a one-story gabled roof wing of wood construction. A shed roofed porch attaches along the front of the one story eave line supported by two slender wood posts. Original wood shingled roofs are modified to corrugated metal. A single-story rectangular addition has been added to the rear of the one and one-half story wing. The house lacks ornamentation or decoration. An original twelve-light, double-hung window punctuates the front facade, with a lowered vent at the gable. A historic photo shows shutters flanking this window. Two similar windows are uniformly placed on the east side. The front facade below the porch has a single leaf transomed door that is symmetrical with a rectangular wood window. Patches of stucco have fallen away from the rear of the adobe wing. A low stuccoed masonry wall, with two central lines of small square openings, replaces an original picket fence along the front and side of the house.

STATEMENT OF SIGNIFICANCE/HISTORY

The John C. Loss House incorporates the only remaining one and one-half story early adobe house in Casa Grande. The house was built before 1890 and is one of the earliest buildings in the survey area. Local lore maintains that John C. Loss, an early owner, buried his wife and child in the backyard. Loss was a Wells Fargo agent in Casa Grande. Although the patches of non-original stucco have fallen away and the front shutters are missing, the L-shaped house retains much of its original integrity.

SOURCES OF ABOVE INFORMATION/BIBLIOGRAPHY

Casa Grande Valley Historical Society newspaper index files
Casa Grande Valley Historical Society history files

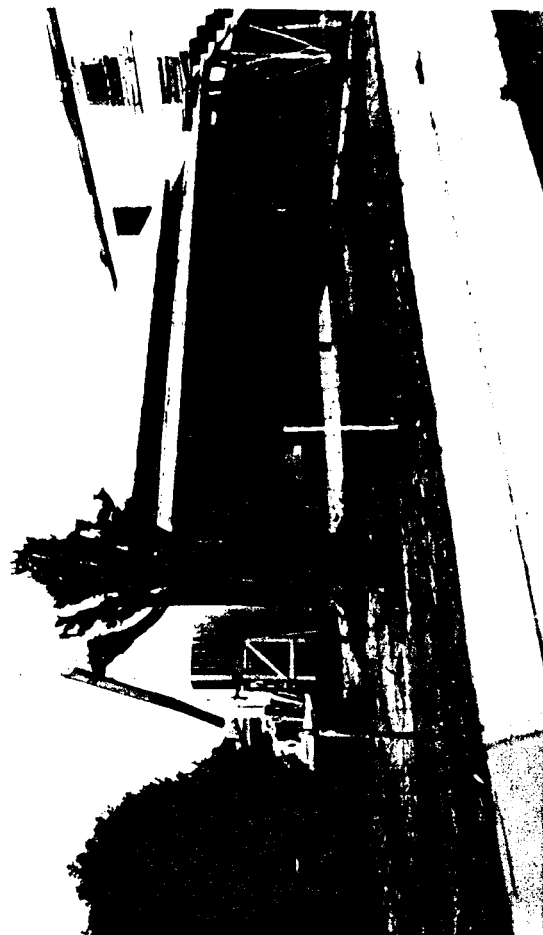
GEOGRAPHICAL DATA/LEGAL DESCRIPTION/VERBAL BOUNDARY DESCRIPTION

Lot 2, Block 43, Casa Grande Townsite

GENERAL COMMENTS/FUTURE PLANS FOR PROPERTY

ARIZONA STATE HISTORIC PROPERTY INVENTORY

HISTORIC PROPERTY NAME Shonessy House		COUNTY Pinal County	INVENTORY NO. CG-106
COMMON PROPERTY NAME			
PROPERTY LOCATION-STREET & NO. 115 West Main Avenue			
CITY,TOWN/VICINITY OF Casa Grande		ASSESSOR'S PARCEL NO. 507-07-242	
OWNER OF PROPERTY Blanche Kennedy		PHONE	
STREET & NO./P.O. BOX 1100 East Nevada			
CITY,TOWN El Paso,		STATE Texas	ZIP
FORM PREPARED BY Janus Associates Inc.		DATE 9/82	
STREET & NO./P.O. BOX 2121 S. Priest Suite 127		PHONE 967-7117	
CITY,TOWN Tempe,		STATE Arizona	ZIP 85282
PHOTO BY Janus Associates Inc.		DATE Feb. 1982	
VIEW looking southwest			
HISTORIC USE residence			
PRESENT USE residence		ACREAGE less/one	
ARCHITECT/BUILDER			
CONSTRUCTION/MODIFICATION DATES pre-1890			



PHYSICAL DESCRIPTION

The Shonessy House is a single-story, rectangular adobe building with a gable roof. The building is stuccoed and the roof is corrugated metal. A shed-roofed addition along the rear (south) of the house is integral with the main structure, and has a single door and two small double-hung windows. A veranda extending the full length of the main facade has a corrugated metal shed roof supported by slender posts and attaches to the house below the eave line. The facade features a center single-leaf door and flanking rectangular double-hung windows.

STATEMENT OF SIGNIFICANCE/HISTORY

The William Shonessy House, built before 1890, is an outstanding and well-maintained example of an early adobe house in Casa Grande. The house retains its original configuration. Although the original shingle roof has been replaced and a rear screened porch has been enclosed, the building preserves most of its original integrity. The house is associated with William Shonessy, a businessman who arrived in Casa Grande around 1900 at the age of sixty-five. In 1913, he built one of the town's first reinforced cast-in-place concrete commercial buildings, which he leased to various businesses and doctors, next to his house. Shonessy left Casa Grande for California for health reasons in 1919 and died there in 1922.

The house is also associated with the family of Don Chun Wo, who occupied the house between 1933 and 1943. Don Chun Wo operated the commercial building next door as a grocery store from 1927 to 1943, and was a highly respected businessman.

SOURCES OF ABOVE INFORMATION/BIBLIOGRAPHY

Casa Grande Valley Historical Society newspaper index
Casa Grande Valley Historical Society photo files

GEOGRAPHICAL DATA/LEGAL DESCRIPTION/VERBAL BOUNDARY DESCRIPTION

89' x 177' on West end of Lot A, Casa Grande Townsite

GENERAL COMMENTS/FUTURE PLANS FOR PROPERTY

ARIZONA STATE HISTORIC PROPERTY INVENTORY

HISTORIC PROPERTY NAME Shonessy Building/Don Chun Wo Store	
COMMON PROPERTY NAME second-hand store	
PROPERTY LOCATION-STREET & NO. 121 West Main Avenue	
CITY, TOWN/VICINITY OF Casa Grande	ASSESSOR'S PARCEL NO. 507-07-242
OWNER OF PROPERTY Blanche Kennedy	PHONE
STREET & NO./P.O. BOX 1100 East Nevada Street	
CITY, TOWN El Paso,	STATE Texas
ZIP	
FORM PREPARED BY Janus Associates Inc.	DATE 9/82
STREET & NO./P.O. BOX 2121 South Priest Suite 127	PHONE 967-7117
CITY, TOWN Tempe,	STATE Arizona
ZIP	85282
PHOTO BY Janus Associates Inc.	DATE Feb. 1982
VIEW looking southeast	
HISTORIC USE commercial	
PRESENT USE vacant	ACREAGE less/one
ARCHITECT/BUILDER	
CONSTRUCTION/MODIFICATION DATES Built 1913	

COUNTY
Pinal County

INVENTORY NO.
CG-107



PHYSICAL DESCRIPTION

The Shonessy Building/Don Chun Wo Store is a two-story rectangular (24' x 60') commercial building built of cast-in-place concrete, with a flat roof and a parapet across both the front and rear facades. The central double-door entry is flanked by two rectangular windows; two windows in the second story are directly above those in the first story. A canopy along the front facade overhangs the first floor entry. Wooden stairs on the east side of the building lead to a second story single-leaf door. The west side has a first story single-leaf door. A central double-door is in the rear (south) facade with windows located the same as main facade windows. Windows on the east and west facades are discretely placed rectangular openings with double-hung sash. Although the building is in deteriorating condition, original features are present, such as pressed tin ceilings on both stories.

STATEMENT OF SIGNIFICANCE/HISTORY

The Shonessy Building/Don Chun Wo Store is significant for its method of construction, its association with two of Casa Grande's well-known businessmen, and its role in the early development of business in Casa Grande.

Built in 1913 by William Shonessy, businessman in Casa Grande, the building was probably the first two-story reinforced cast-in-place concrete commercial building in Casa Grande. The building has not been modified and has high integrity despite its deteriorated condition. Original intact features include pressed tin ceilings, woodwork, and floors.

After construction, the lower floor was leased as a store and the upper floor leased to Dr. Edward J. Gungle, one of Casa Grande's first doctors; John F. Edwards, a dentist; Burgess' Real Estate Offices; Woods and Wyatt Realty Offices; and the Casa Grande Board of Trade. The first bank in Casa Grande, the Casa Grande Valley Bank, opened here in 1914.

In 1927, Don Chun Wo, a Chinese merchant from Tucson, opened a grocery store on the first floor; the second being rented as apartments which he managed. While a grocer in Tucson, Mr. Don started the Chinese Free Masons, acted as court interpreter for the Chinese-speaking population; was "mayor" of the Chinese section, and was a member of the Chamber of Commerce. In Casa Grande, he earned a reputation for generosity for extending credit to his customers. He spoke Papago, Pima, Spanish, Chinese, and English. Mr. Don retired in 1943, after which the building became a second-hand store.

SOURCES OF ABOVE INFORMATION/BIBLIOGRAPHY

Casa Grande Valley Historical Society newspaper index file
Casa Grande Valley Historical Society history and photo file
Interviews: Merilyn Don 1977
Don Chun Wo 1927, 1940
Jerry and Merilyn Don 8/2/82

GEOGRAPHICAL DATA/LEGAL DESCRIPTION/VERBAL BOUNDARY DESCRIPTION

W. 89' x 177', Block 43, Casa Grande Townsite

GENERAL COMMENTS/FUTURE PLANS FOR PROPERTY

ARIZONA STATE HISTORIC PROPERTY INVENTORY

HISTORIC PROPERTY NAME Walker/Armenta House		COUNTY Pinal County	INVENTORY NO. CG-111
COMMON PROPERTY NAME Walker/Armenta House			
PROPERTY LOCATION-STREET & NO. 210 S. Washington			
CITY,TOWN/VICINITY OF Casa Grande		ASSESSOR'S PARCEL NO. 507-07-288	
OWNER OF PROPERTY Donald R. and Ruth E. Miller		PHONE	
STREET & NO./P.O. BOX 210 South Washington			
CITY,TOWN Casa Grande		STATE Arizona	ZIP 85222
FORM PREPARED BY Janus Associates Inc.		DATE 9/82	
STREET & NO./P.O. BOX 2121 S. Priest Suite 127		PHONE 967-7117	
CITY,TOWN Tempe		STATE Arizona	ZIP 85282
PHOTO BY Janus Associates Inc.		DATE Feb. 1982	
VIEW looking east			
HISTORIC USE residence			
PRESENT USE vacant		ACREAGE	
ARCHITECT/BUILDER			
CONSTRUCTION/MODIFICATION DATES c 1880			



PHYSICAL DESCRIPTION

The Walker/Armenta House is a two-story adobe building with a medium-pitched gable roof with corrugated metal and a shed roof veranda extending the width of the front facade. At the second story the veranda retains its original railing with square banisters and simple balustrade. The south end of the veranda has been partitioned into a small room. Porch supports on both stories are five slender square posts. The original first story frieze of vertical boards extends the length of the house. The lower deck has been replaced with concrete. An original wood stairway framed with wood paneling leads to the second story. A single door and one rectangular double-hung window open through the lower main facade. A single door is at the rear of the house. An addition at the rear of the house is made of wood, with a central door and two double-hung windows. Modifications have been made to the walls, as repairs or to add new openings, and the building is in a deteriorating condition.

STATEMENT OF SIGNIFICANCE/HISTORY

The Walker/Armenta Residence is significant as one of the few remaining two-story adobe houses in Casa Grande. The walls are reported to be 18" thick. The original character of the house is unchanged, although it is in a deteriorated state. The two-story structure constructed of adobe and long veranda typifies the classic southwestern two-story adobe. The house is also one of the earliest dwellings in the survey area.

The house is reputed to have been built by Judge J. D. Walker in the late 1870s or early 1880s. Walker was founder and owner of the Vekol Mine between 1886 and the early 1890s. He was also Probate Judge for Pinal County. In 1907, J. A. Armenta bought the house. Armenta was one of Casa Grande's early merchants, arriving in the early 1900s. A mercantile store he owned in partnership with T. R. Peart was destroyed in the 1914 fire. Armenta bought Peart's interest and rebuilt the store, continuing in the mercantile business until his retirement. The house was the Armenta family home for many years.

SOURCES OF ABOVE INFORMATION/BIBLIOGRAPHY

Casa Grande Valley Historical Society photo and history files
Casa Grande Valley Historical Society newspaper indexing
Interview: Ruth Miller--August 31, 1982

GEOGRAPHICAL DATA/LEGAL DESCRIPTION/VERBAL BOUNDARY DESCRIPTION

Lots 5-10, Block 55, Casa Grande Townsite

GENERAL COMMENTS/FUTURE PLANS FOR PROPERTY

ARIZONA STATE HISTORIC PROPERTY INVENTORY

HISTORIC PROPERTY NAME Saint Anthony's Church and Rectory		COUNTY Pinal County	INVENTORY NO. CG-113
COMMON PROPERTY NAME Murphy Hall			
PROPERTY LOCATION-STREET & NO. 215 North Picacho			
CITY, TOWN/VICINITY OF Casa Grande		ASSESSOR'S PARCEL NO. 507-07-163	
OWNER OF PROPERTY Catholic Church		PHONE	
STREET & NO./P.O. BOX 192 South Stone Avenue			
CITY, TOWN Tucson,		STATE Arizona	ZIP 85702
FORM PREPARED BY Janus Associates Inc.		DATE 9/82	
STREET & NO./P.O. BOX 2121 S. Priest Suite 127		PHONE 967-7117	
CITY, TOWN Tempe,		STATE Arizona	ZIP 85282
PHOTO BY Casa Grande Survey Volunteer		DATE 6/82	
VIEW looking southwest			
HISTORIC USE church			
PRESENT USE church hall		ACREAGE less/one	
ARCHITECT/BUILDER			
CONSTRUCTION/MODIFICATION DATES Built 1935			



PHYSICAL DESCRIPTION

This small church with gabled roof is simply designed with a Spanish Colonial Revival influence of stucco over adobe brick. A bell tower topped with a small cross rises slightly above the roofline at the north corner of the front facade. A small gabled addition extends from the rear with a second, smaller addition extending further. A central arched wooden door in a tiled recess dominates the front facade with a small circular stained glass window in the gable above. The bell tower rises to four arched openings in a diamond pattern. This pattern is expressed in curvilinear termination of the tower. A ground story central niche enclaves a statue. The north facade is punctured by five arched openings. The smallest addition has three small, uniformly placed windows. The larger addition has a door and a small vertically pivoting window. The church is well-maintained and unaltered except for the rear additions.

The stuccoed adobe rectory to the south of the main church has an equally simple design. Its original Spanish Colonial Revival influence conformed with the church design in exterior detail. The original interior of the same influence has a large (16' x 31') open beamed ceiling.

STATEMENT OF SIGNIFICANCE/HISTORY

Saint Anthony's Church, built in 1935, and the nearby rectory, built in 1936, were the first structures built to serve St. Anthony's Catholic Parish, established in 1932. Previously, a small adobe chapel had served the visiting priests and Catholic congregation. Father P. J. Murphy, the first resident priest, led the drive to build the church and rectory. Much of the materials and labor for the construction were donated by parishioners and all the church's appointments were gifts. Both buildings were designed in Spanish Colonial Revival Style to blend with the southwestern environment and religious tradition. Dedications of the buildings, in 1935 and 1936, were attended by visitors from around the state, including Governor B. B. Moeur, who spoke at each function. After the building of the new St. Anthony's in recent years, the 1935 church was renamed Murphy Hall and continues to be used for church functions.

Both the church and rectory are built of adobe. Material salvaged from the razing of the old church was incorporated into the construction of the rectory. Adobe bricks in the church were made at the site and are reported to be 18" thick. Interiors and exteriors of the buildings are little changed. Both buildings are significant examples of the revival of adobe as a construction material during the 1930s and each building retains a high degree of integrity.

SOURCES OF ABOVE INFORMATION/BIBLIOGRAPHY

Casa Grande Valley Historical Society newspaper index files
Casa Grande Valley Historical Society history and photo files
Interview: Mollie Cruz--August 29, 1982
"Souvenir of the Dedication of St. Anthony's Church" December 3, 1935

GEOGRAPHICAL DATA/LEGAL DESCRIPTION/VERBAL BOUNDARY DESCRIPTION

Lots 13-20, Block 24, Casa Grande Townsite

GENERAL COMMENTS/FUTURE PLANS FOR PROPERTY

ARIZONA STATE HISTORIC PROPERTY INVENTORY

HISTORIC PROPERTY NAME Souva/Cruz House		COUNTY Pinal County	INVENTORY NO. CG-114
COMMON PROPERTY NAME Cruz House		QUAD/COUNTY MAP	
PROPERTY LOCATION-STREET & NO. 310 West Main Street			
CITY,TOWN/VICINITY OF Casa Grande		ASSESSOR'S PARCEL NO. 507-07-020	
OWNER OF PROPERTY Dolores Bedoya		PHONE	
STREET & NO./P.O. BOX 310 West Main Street			
CITY,TOWN Casa Grande,		STATE Arizona	ZIP 85222
FORM PREPARED BY Janus Associates Inc.		DATE 9/82	
STREET & NO./P.O. BOX 2121 S. Priest Suite 127		PHONE 967-7117	
CITY,TOWN Tempe,		STATE Arizona	ZIP 85282
PHOTO BY Casa Grande Survey Volunteer		DATE 6/82	
VIEW looking north			
HISTORIC USE residence			
PRESENT USE vacant		ACREAGE less/one	
ARCHITECT/BUILDER M. E. Souva, builder			
CONSTRUCTION/MODIFICATION DATES c. 1890			



PHYSICAL DESCRIPTION

The Cruz House is a small, single-story adobe building which was later faced with brick across the front facade. Remaining walls are covered with stucco. The medium-pitched gable roof is presently covered with strips of corrugated metal. The main facade is broken by a slightly offset single doorway and a rectangular double-hung window. Brick segmental arches frame the window and door. The brick facing on the west end of the facade, including the window arch, has fallen away since 1980. Windows on remaining facades of the house are individually placed. A lean-to addition on the west side is covered with stucco and has a shed roof extending over a concrete pad, forming a porch. A lean-to addition on the east side is of frame construction. The building is in a deteriorated condition.

STATEMENT OF SIGNIFICANCE/HISTORY

The house at 310 West Main is the only example of a brick-faced adobe building in Casa Grande. The house was built around 1890 by M. E. Souva, who opened the Gilt Edge Saloon in 1879 and operated it until 1903. Jesse Mayhew, the second owner, added the brick front. Mayhew was a county supervisor who hauled freight from the railroad to the Silver King Mine with his twenty-four-mule team.

The Ramon Cruz family bought the property in 1908 and lived there until 1927. Ramon Cruz, after clerking in various stores in southern Arizona, operated a trading post at Sacaton. In 1905, he established a trading post in Casa Grande, which he operated until his death in 1924. Cruz was a member of Casa Grande's first elementary school board and was a respected citizen.

Although in deteriorated condition, the building is a noteworthy example of a unique type of construction in Casa Grande.

SOURCES OF ABOVE INFORMATION/BIBLIOGRAPHY

Casa Grande Valley Historical Society history files
Casa Grande Valley Historical Society newspaper index files

GEOGRAPHICAL DATA/LEGAL DESCRIPTION/VERBAL BOUNDARY DESCRIPTION

S $\frac{1}{2}$ 7 W 147.50' Block 4, Casa Grande Townsite

GENERAL COMMENTS/FUTURE PLANS FOR PROPERTY

ARIZONA STATE HISTORIC PROPERTY INVENTORY

HISTORIC PROPERTY NAME Southern Pacific Railroad Depot		COUNTY Pinal County	INVENTORY NO. CG-115
COMMON PROPERTY NAME Southern Pacific Railroad Depot		QUAD/COUNTY MAP	
PROPERTY LOCATION-STREET & NO. Washington and Main Street			
CITY,TOWN/VICINITY OF Casa Grande		ASSESSOR'S PARCEL NO. 507-07-	
OWNER OF PROPERTY Southern Pacific Railroad		PHONE	
STREET & NO./P.O. BOX West Main Street			
CITY,TOWN Casa Grande, Arizona		STATE 85222	
FORM PREPARED BY Janus Associates Inc.		DATE 9/82	
STREET & NO./P.O. BOX 2121 S. Priest Suite 127		PHONE 967-7117	
CITY,TOWN Tempe,		STATE Arizona	
ZIP 85282			
PHOTO BY Janus Associates Inc.		DATE Feb. 1982	
VIEW looking northwest			
HISTORIC USE Railroad Depot--Passenger and freight			
PRESENT USE Freight Depot		ACREAGE	
ARCHITECT/BUILDER			
CONSTRUCTION/MODIFICATION DATES c 1935			



PHYSICAL DESCRIPTION

The Southern Pacific Railroad Depot is a long, narrow, one-story, flat-roofed structure of Moderne massing and detailing of Native American Art Deco motifs. The main central rectangular block features three large rectangular multi-paned windows and single-leaf door with transom on each side. Bands displaying Native American Art Deco motifs trim the door and continue along the top of the windows. The east facade features a low rectangular mass from which extends a lower canopy supported by four large round columns. The front entry below the canopy steps back to a single-leaf door with sidelights and a transom. In the rear, the building steps down to form a long low baggage structure of rectangular mass with large square sliding door openings on each side. The rear facade has a single offset large freight door opening onto a loading dock.

STATEMENT OF SIGNIFICANCE/HISTORY

The Southern Pacific Railroad Depot was the second to be built in Casa Grande. The first, built in Casa Grande in 1897, burned in 1934. The depot built in 1935 was modern in every respect and bears witness to the importance of railroad traffic during the 1930s. Although the depot is unchanged on the exterior, remodeling of the interior resulted in the covering of an original mural of a Southwestern Indian scene.

This building is the only one of its kind in Casa Grande and possibly in Arizona. The building's form shows clear evidence of the Moderne Style. Its Native American Art Deco motifs surrounding side entries are unique. This unmodified train depot merits preservation as a unique example of an unusual architectural style and as a place having significant impact on community life.

SOURCES OF ABOVE INFORMATION/BIBLIOGRAPHY

Casa Grande Valley Historical Society newspaper index files
Casa Grande Valley Historical Society history and photo files
Interview: Kenny Rogers--September 21, 1982

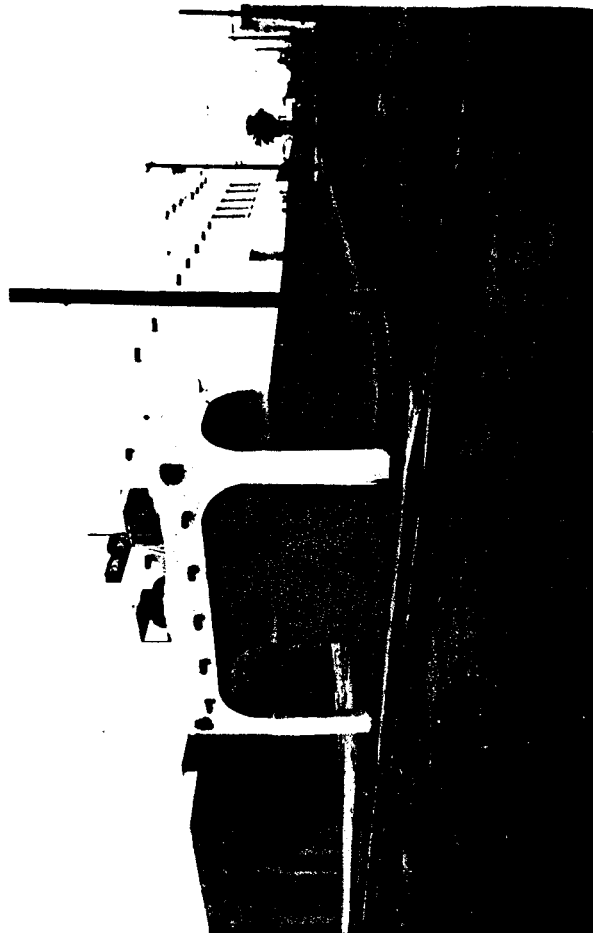
GEOGRAPHICAL DATA/LEGAL DESCRIPTION/VERBAL BOUNDARY DESCRIPTION

Southern Pacific Right of Way

GENERAL COMMENTS/FUTURE PLANS FOR PROPERTY

ARIZONA STATE HISTORIC PROPERTY INVENTORY

HISTORIC PROPERTY NAME Cruz Trading Post		COUNTY Pinal County	INVENTORY NO. CG-116
COMMON PROPERTY NAME			
PROPERTY LOCATION-STREET & NO. 200 West Main Street			
CITY,TOWN/VICINITY OF Casa Grande		ASSESSOR'S PARCEL NO. 507-07-068	
OWNER OF PROPERTY Refugio & Josephine Martinez		PHONE	
STREET & NO./P.O. BOX 1341 North Crane			
CITY,TOWN Casa Grande,		STATE Arizona	ZIP 85222
FORM PREPARED BY Janus Associates Inc.		DATE 9/82	
STREET & NO./P.O. BOX 2121 S. Priest Suite 127		PHONE 967-7117	
CITY,TOWN Tempe,		STATE Arizona	ZIP 85282
PHOTO BY Janus Associates Inc.		DATE Feb. 1982	
VIEW looking northwest			
HISTORIC USE commercial			
PRESENT USE commercial		ACREAGE less/one	
ARCHITECT/BUILDER			
CONSTRUCTION/MODIFICATION DATES Built c 1888, modified c 1937			



PHYSICAL DESCRIPTION

The Cruz Trading Post is a stuccoed adobe building, basically rectangular in plan with one story in front stepping up to a two-story rear addition. Later renovated to a Pueblo Revival Style, it has projecting vigas, flat roof, and stepped parapet walls. A similar parapet surrounds an arcade of lower height extending the width of the front facade. The arcade has rounded openings. A concrete block wall supports a partial overhanging second story at the rear of the west facade. An original entry in the front facade is infilled making the doorway smaller in height and width. The front window, symmetrical with the entry, is infilled with glass block and plywood. Windows of the rear addition's upper east facade are double hung and equally placed. Doors on the same facade are randomly placed at street level, and an original opening is infilled to make a smaller door and arched opening. Other windows are random in size and placement.

STATEMENT OF SIGNIFICANCE/HISTORY

Although the building at 200 West Main Street is best known as the Cruz Trading Post, it has a long history as a commercial building, housing a variety of businesses in Casa Grande's former central business district. Built by Thomas Tomlinson around 1888, it was originally a one-story rectangular adobe building with double entries and functioned as a general store and post office until 1897. Between 1897 and 1898 the building was operated as Ben Bible's Saloon. It continued to be used for general stores, offices for doctors, the telephone office, a lodge meeting hall, and as the Casa Grande Valley Bank building until 1937, when Ramon Cruz purchased it for his trading post. The building was subsequently remodeled into the present Pueblo Revival Style, and was the location of the trading post until 1955. It is presently a tavern.

Ramon Cruz, Sr., was a well-known Casa Grande businessman. After operating a trading post in Sacaton, he moved to Casa Grande in 1905 and opened a trading post. After his death in 1924, his sons continued the family business for many years. Cruz was a respected Casa Grande citizen and a member of the first elementary school board. This building is one of Casa Grande's oldest commercial buildings, is in sound condition, and retains its stylistic vigas and pressed tin ceiling. It is the only example in Casa Grande of a commercial building executed in a Pueblo Revival Style. Both the age of the building and the building's unique style contribute to its significance.

SOURCES OF ABOVE INFORMATION/BIBLIOGRAPHY

Casa Grande Valley Historical Society newspaper index files
Casa Grande Valley Historical Society photo and history files

GEOGRAPHICAL DATA/LEGAL DESCRIPTION/VERBAL BOUNDARY DESCRIPTION

25' on Main Street x 100.5 on Washington Street, Block 12, Casa Grande Townsite

GENERAL COMMENTS/FUTURE PLANS FOR PROPERTY

ARIZONA STATE HISTORIC PROPERTY INVENTORY

HISTORIC PROPERTY NAME Armenta Building	
COMMON PROPERTY NAME	
PROPERTY LOCATION-STREET & NO. 121 West Main Street	
CITY, TOWN/VICINITY OF Casa Grande	ASSESSOR'S PARCEL NO. 507-07-079
OWNER OF PROPERTY Harlyn L. and Dorothy Griffiths	PHONE
STREET & NO./P.O. BOX Tierra Palmas	
CITY, TOWN Casa Grande,	STATE Arizona
ZIP 85222	
FORM PREPARED BY Janus Associates Inc.	DATE 9/82
STREET & NO./P.O. BOX 2121 South Priest Suite 127	PHONE 967-7117
CITY, TOWN Tempe,	STATE Arizona
ZIP 85282	
PHOTO BY Casa Grande Survey Volunteer	DATE June 1982
VIEW looking east	
HISTORIC USE commercial	
PRESENT USE vacant	ACREAGE less/one
ARCHITECT/BUILDER contractor: A. Fricke	
CONSTRUCTION/MODIFICATION DATES Built c. 1914	

COUNTY Pinal County	INVENTORY NO. CG-117
------------------------	-------------------------



PHYSICAL DESCRIPTION

This two-story commercial building is constructed of cast-in-place concrete and is distinguished by rusticated concrete block facing on the main facade. The flat roof is deteriorated. Wooden ledgers demarcate the previous existence of a wooden veranda across the main facade, whose upper balustraded deck was later modified to a shed-roofed screened porch. Bands of concrete extend across facade forming the lintels of the windows and doors. A dentil frieze extends below the cornice on the front facade. This facade has two entries on the first floor, one centered and one offset to the east. A rectangular window on the west end balances the facade. On the second floor, a central door is flanked by two smaller rectangular openings. All windows and doors have been boarded over.

A two-story addition at the rear of the building is taller than the original building. The rear facade is broken by two doors on the first floor and two windows on the second. A third addition attached to the second addition has been removed.

STATEMENT OF SIGNIFICANCE/HISTORY

The Armenta Building, as the last remaining example of two-story commercial buildings on Main Street, is representative of the commercial buildings erected after the 1914 fire. This building was in use during the period when Main Street served as Casa Grande's central business district, from 1914 through the 1940s. It is also the only remaining example of the use of concrete as a construction material during that period of building in the previous central commercial district.

Although half of the original structure is removed, the building maintains integrity as an example of Neoclassical Revival influence in Casa Grande's commercial streetscape.

The building was built in 1914 by J. M. Armenta, prominent Casa Grande merchant, formerly in business with T. R. Peart. The Armenta family owned the building as a commercial property until 1923. It continued in this capacity until recent years.

SOURCES OF ABOVE INFORMATION/BIBLIOGRAPHY

Casa Grande Valley Historical Society history files
Casa Grande Valley Historical Society newspaper indexing files
Interview: Nell Rimal Goetcher--September 21, 1982

GEOGRAPHICAL DATA/LEGAL DESCRIPTION/VERBAL BOUNDARY DESCRIPTION

Lot 17, Block 13, Casa Grande Townsite

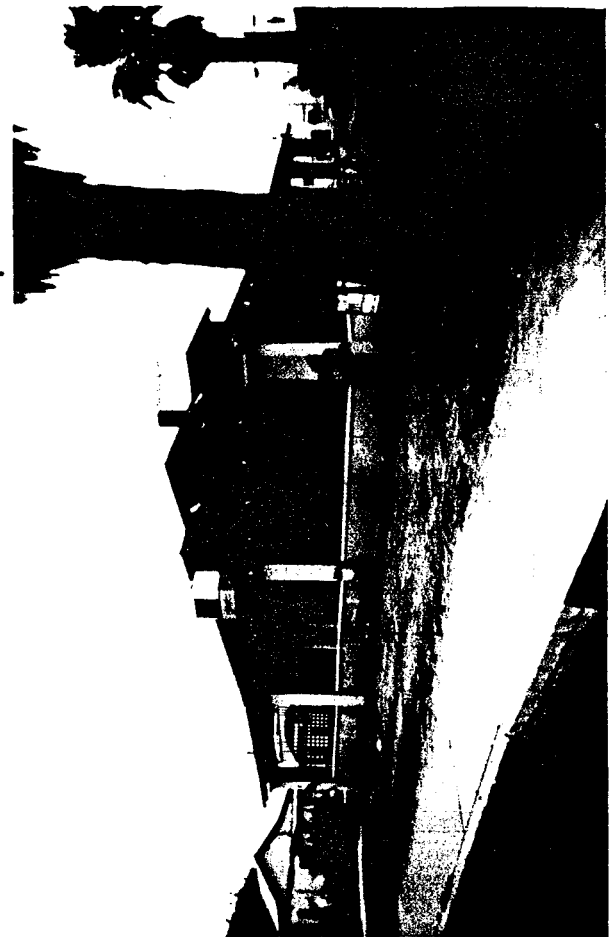
GENERAL COMMENTS/FUTURE PLANS FOR PROPERTY

owner plans remodeling of building in near future

ARIZONA STATE HISTORIC PROPERTY INVENTORY

HISTORIC PROPERTY NAME Meehan/Gaar House	
COMMON PROPERTY NAME Gaar House	
PROPERTY LOCATION-STREET & NO. 202 West 1st Street	
CITY, TOWN/VICINITY OF Casa Grande	ASSESSOR'S PARCEL NO. 507-07-058
OWNER OF PROPERTY Roger E. & Mildred H. Wolf	PHONE
STREET & NO./P.O. BOX 4928 East Meadowbrook	
CITY, TOWN Flagstaff,	STATE Arizona
ZIP 85001	
FORM PREPARED BY Janus Associates Inc.	DATE 9/82
STREET & NO./P.O. BOX 2121 South Priest Suite 127	PHONE 967-7117
CITY, TOWN Tempe,	STATE Arizona
ZIP 85282	
PHOTO BY Janus Associates Inc.	DATE Feb. 1982
VIEW looking northwest	
HISTORIC USE residence	
PRESENT USE residence	ACREAGE less/one
ARCHITECT/BUILDER	
CONSTRUCTION/MODIFICATION DATES Built early 1900s	

COUNTY Pinal County	INVENTORY NO. CG-119
------------------------	-------------------------



PHYSICAL DESCRIPTION

This one-story square plan dwelling has a south and east orientation to First and Washington Streets. A veranda extends on three sides with the north, nonstreet facing side infilled with a stucco addition. A wood-shingled pyramidal roof surmounts the stuccoed adobe structure joining to the later shed veranda roof. Hipped-roofed dormers with vents protrude symmetrically from the south and east roof hips. A lattice carport addition to the west has an asphalt-shingled shed roof attaching at the original eave of the house. The Bungalow veranda with large square concrete slab columns and low connecting perimeter walls is a modification of an earlier wood veranda with slender wood posts and a shed roof separate from the main roof. French doors are symmetrical on the east facade and a front door is off-center on the south facade. Original casement windows remain on the south and east. Addition windows are casement or plywood infilled. Chimneys protrude from the north and east roof hips.

STATEMENT OF SIGNIFICANCE/HISTORY

The Meehan/Gaar House is significant for its association with two of Casa Grande's well-known citizens. Tom J. Meehan came to Casa Grande in 1903 and built the house at 202 West 1st Street soon after. Meehan owned the popular Gilt Edge Saloon from 1905 until it was burned in 1914. He rebuilt the saloon after the fire but died in late 1914. He also invested in local mines and served on the Casa Grande Board of Trade.

Fanne Gaar bought the house in 1920. She had arrived in Casa Grande in 1915 and worked in the city's first bank, the Casa Grande Valley Bank. Mrs. Gaar later operated a hardware store and real estate business and was active in Casa Grande civic affairs, serving on the city council. In 1927, she was the first woman to be elected mayor of an Arizona city and served in that capacity until 1929. Mrs. Gaar was one of Casa Grande's most respected citizens and lived in the house until her death.

The house is also architecturally significant as an unusual example of the Colonial Revival influence executed in adobe. Although not original, the bungalow adaptation of the veranda, probably executed by Mrs. Gaar, is now a significant feature of the house.

SOURCES OF ABOVE INFORMATION/BIBLIOGRAPHY

Casa Grande Valley Historical Society newspaper indexing files
Casa Grande Valley Historical Society photo files and history files
Interview: Opal McNatt Barlow--September 8, 1982

GEOGRAPHICAL DATA/LEGAL DESCRIPTION/VERBAL BOUNDARY DESCRIPTION

Lots 18-20, Block 11, Casa Grande Townsite

GENERAL COMMENTS/FUTURE PLANS FOR PROPERTY

ARIZONA STATE HISTORIC PROPERTY INVENTORY

HISTORIC PROPERTY NAME Bien/McNatt House		COUNTY Pinal County	INVENTORY NO. CG-120
COMMON PROPERTY NAME McNatt House		QUAD/COUNTY MAP	
PROPERTY LOCATION-STREET & NO. 208A West 1st Street			
CITY,TOWN/VICINITY OF Casa Grande		ASSESSOR'S PARCEL NO. 507-07-57	
OWNER OF PROPERTY Marvin W. & Viviane L. Grindler		PHONE	
STREET & NO./P.O. BOX 204 North Sacaton			
CITY,TOWN Casa Grande,		STATE Arizona	ZIP 85222
FORM PREPARED BY Janus Associates Inc.		DATE 9/82	
STREET & NO./P.O. BOX 2121 South Priest Suite 127		PHONE 967-7117	
CITY,TOWN Tempe,		STATE Arizona	ZIP 85282
PHOTO BY Janus Associates Inc.		DATE Feb. 1982	
VIEW looking northwest			
HISTORIC USE residence			
PRESENT USE residence		ACREAGE less/one	
ARCHITECT/BUILDER			
CONSTRUCTION/MODIFICATION DATES c. 1880			



PHYSICAL DESCRIPTION

This irregularly-shaped one-story structure of stuccoed adobe construction has a very early adobe core. A gabled metal roof with ridge parallel to the front facade tops this core. Two early low, shed-roofed stuccoed additions connect to the main structure on the east and west. A wood ledger remains from an early low shed-roofed wood porch along the front and partial east facades. A wood single leaf door punctuates the front facade of the original dwelling. The simple design lacks decoration or ornament. West addition windows are wood double hung. The central window on the east front facade addition is a late eight-light steel casement window.

STATEMENT OF SIGNIFICANCE/HISTORY

The Bien-McNatt House is one of the oldest adobe buildings in Casa Grande and is known for its long association with Carr McNatt, one of the city's most popular citizens. The house was also the residence of Ed Bien. Bien owned a blacksmith and wagon shop to the east of the house. Carr S. McNatt bought the property in 1908 and the McNatt family occupied the house for over forty years. McNatt began as a bartender in his brother-in-law's Gilt Edge Saloon in 1907. He later operated a soft-drink parlor and became a Casa Grande deputy sheriff. McNatt was well-liked and a respected man in Casa Grande. He died in the mid-1960's.

The original house consists of what appears to be a "shotgun" plan adobe core with an early wood frame east addition built between 1898 and 1906. Even with the recent removal of the front porch roof and posts and with added form on the west, the house remains a good example of early adobe dwellings in Casa Grande.

SOURCES OF ABOVE INFORMATION/BIBLIOGRAPHY

Casa Grande Valley Historical Society newspaper index files
Casa Grande Valley Historical Society history files
Interview: Opal McNatt Stein

GEOGRAPHICAL DATA/LEGAL DESCRIPTION/VERBAL BOUNDARY DESCRIPTION

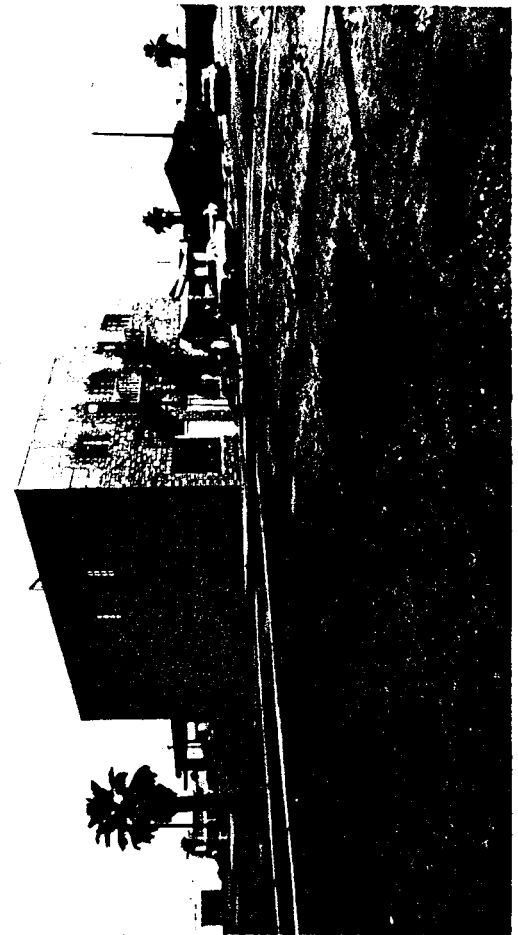
Lots 14, 15, 16, 17, Block 11, Casa Grande Townsite

GENERAL COMMENTS/FUTURE PLANS FOR PROPERTY

ARIZONA STATE HISTORIC PROPERTY INVENTORY

HISTORIC PROPERTY NAME Sacaton Hotel	
COMMON PROPERTY NAME Sacaton Apartments	
PROPERTY LOCATION-STREET & NO. 204 North Sacaton Street	
CITY,TOWN/VICINITY OF Casa Grande	ASSESSOR'S PARCEL NO. 507-07-055
OWNER OF PROPERTY Marvin W. Grindler	PHONE
STREET & NO./P.O. BOX 204 North Sacaton Street	
CITY,TOWN Casa Grande,	STATE Arizona
ZIP 85222	
FORM PREPARED BY Janus Associates Inc.	DATE 9/82
STREET & NO./P.O. BOX 2121 South Priest Suite 127	PHONE 967-7117
CITY,TOWN Tempe,	STATE Arizona
ZIP 85282	
PHOTO BY Janus Associates Inc.	DATE March 1982
VIEW looking northeast	
HISTORIC USE hotel	
PRESENT USE resident apartments	ACREAGE less/one
ARCHITECT/BUILDER Builder--Holland Minear	
CONSTRUCTION/MODIFICATION DATES Built 1917--Modified 1920, 1929, 1950	

COUNTY Pinal County	INVENTORY NO. CG-121
------------------------	-------------------------



PHYSICAL DESCRIPTION

The Sacaton Hotel is a modified two-story structure of basically rectangular plan and massing located on a corner. The original rectangular form was added to, first to the north and then to the east. Orientation is toward the hotel's canopy entry on the west supported by two random ashler-faced square columns and toward three commercial bays on the south. The original structure and addition walls are faced with random ashlar to three-quarters height on the south, west, and north. Scored stucco covers the remaining wall surfaces. Second story windows are placed uniformly, sill height at the top of the ashlar facing. All second-story windows have been modified with twelve-light steel casements framed with simulated stone quoins and flat arches. Toward the south two original second-story doors open to iron balcony fire escapes, which replaced an original veranda. A wood shed-roofed balcony extends from the north on an angled ashler-faced base. First-story windows are eight-light steel casement irregularly placed on the east or fixed glass on the south store fronts. Interior features remaining intact and well-maintained are pressed tin ceilings, wood flooring, and wood door frames in the rooms, and the original registration desk, wood staircase and balustrade, and wood wainscot in the lobby.

STATEMENT OF SIGNIFICANCE/HISTORY

The Sacaton Hotel is the only remaining two-story hotel within Casa Grande's original business district. The concrete building was constructed in 1917, across the street from the prominent San Carlos Hotel, and primarily served railroad passengers. This period in Casa Grande's history (1915-1920) involved extensive rebuilding after the disastrous 1914 fire, initiation of water and electrical systems in the city, and incorporation of Casa Grande as a city. Construction of the hotel was consistent with the growth of the town and expectation of increased railroad business.

The hotel was built by Holland M. Minear, and was operated by members of his family for many years. The southwest corner portion of the hotel's first floor served as a post office from 1918 to 1922, and was the location of Harmon's merchantile store after 1928. Other businesses occupied the corner in subsequent years. Although the exterior was faced with ashlar in the 1950s, this modification appears to be reversible. Interior alterations are limited to some door relocations.

SOURCES OF ABOVE INFORMATION/BIBLIOGRAPHY

Casa Grande Valley Historical Society history and photo files
Casa Grande Valley Historical Society newspaper index files
Interview: Marvin W. Grindler, September 1982

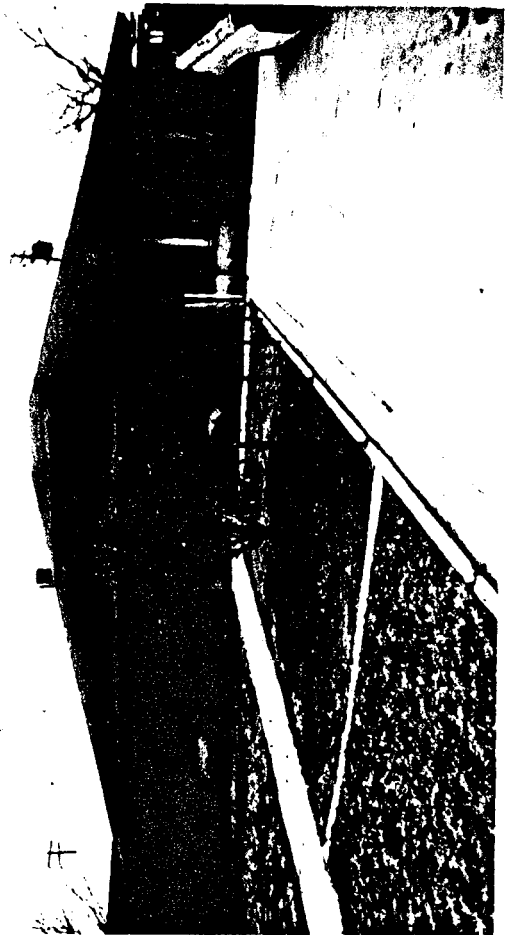
GEOGRAPHICAL DATA/LEGAL DESCRIPTION/VERBAL BOUNDARY DESCRIPTION

Lots 11, 12, 13, Block 11, Casa Grande Townsite

GENERAL COMMENTS/FUTURE PLANS FOR PROPERTY

ARIZONA STATE HISTORIC PROPERTY INVENTORY

HISTORIC PROPERTY NAME Judge William T. Day House		COUNTY Pinal County	INVENTORY NO. CG-122
COMMON PROPERTY NAME			
PROPERTY LOCATION-STREET & NO. 310 West 1st Street			
CITY,TOWN/VICINITY OF Casa Grande		ASSESSOR'S PARCEL NO. 507-07-03	
OWNER OF PROPERTY Clifford & Rosalie Chamberlain		PHONE	
STREET & NO./P.O. BOX 306 West 1st Street			
CITY,TOWN Casa Grande		STATE Arizona	ZIP 85222
FORM PREPARED BY Janus Associates Inc.		DATE 9/82	
STREET & NO./P.O. BOX 2121 South Priest Suite 127		PHONE 967-7117	
CITY,TOWN Tempe,		STATE Arizona	ZIP 85282
PHOTO BY Janus Associates Inc.		DATE Feb. 1982	
VIEW looking north			
HISTORIC USE residence			
PRESENT USE residence		ACREAGE less/one	
ARCHITECT/BUILDER			
CONSTRUCTION/MODIFICATION DATES Built c. 1886, Modified 1918-22			



PHYSICAL DESCRIPTION

This one-story house probably originated as an adobe Sonoran-style structure. It was later modified into a bungalow-style building by the addition of a veranda on three sides and a large low sloping hipped roof with a dual-vented shed dormer centered on the front hip. Presently, board and batten clad additions infill the veranda leaving only a small front porch. Further stuccoed additions extend from the northeast corner to a stuccoed outstructure with a gabled roof of corrugated metal. The wood-shingled roof of the main structure has been replaced by asphalt shingles. The front door is off-center. Two three-light aluminum windows appear on each end of the veranda additions. Other wood casement windows are irregular in size and placement.

STATEMENT OF SIGNIFICANCE/HISTORY

This house is significant as the residence of Judge William T. Day, who built the original home around 1886. Day had been a school teacher in Virginia and Illinois before coming to Arizona in 1882. He was superintendent and general manager of the Vekol Mine in 1888, and also prospected for copper, iron and gold. He was elected to the territorial legislature in 1891 and served during the seventeenth session. After leaving the Vekol, he established a trading post among the Papago Indians, and served as Justice of the Peace. After retiring in 1918, Judge Day, with his son Darby, built the San Carlos Hotel adjacent to his home.

The Day House is also significant as one of Casa Grande's earliest houses.

SOURCES OF ABOVE INFORMATION/BIBLIOGRAPHY

Casa Grande Valley Historical Society newspaper index file
Casa Grande Valley Historical Society history files

GEOGRAPHICAL DATA/LEGAL DESCRIPTION/VERBAL BOUNDARY DESCRIPTION

Lots 15, 16, 17, Block 5, Casa Grande Townsite

GENERAL COMMENTS/FUTURE PLANS FOR PROPERTY

ARIZONA STATE HISTORIC PROPERTY INVENTORY

HISTORIC PROPERTY NAME Laundry Building		COUNTY Pinal County	INVENTORY NO. CG-125
COMMON PROPERTY NAME		QUAD/COUNTY MAP	
PROPERTY LOCATION-STREET & NO. Rear of 309 West 8th			
CITY, TOWN/VICINITY OF Casa Grande		ASSESSOR'S PARCEL NO. 506-07-049	
OWNER OF PROPERTY Mrs. Charles Richardson		PHONE	
STREET & NO./P.O. BOX 1031 North Colorado			
CITY, TOWN Casa Grande		STATE Arizona	ZIP 85222
FORM PREPARED BY Janus Associates Inc.		DATE 9/82	
STREET & NO./P.O. BOX 2121 South Priest Suite 127		PHONE 967-7117	
CITY, TOWN Tempe,		STATE Arizona	ZIP 85282
PHOTO BY Casa Grande Survey Volunteer		DATE June 1982	
VIEW looking north			
HISTORIC USE commercial			
PRESENT USE residential/vacant		ACREAGE less/one	
ARCHITECT/BUILDER			
CONSTRUCTION/MODIFICATION DATES 1928-1929			



PHYSICAL DESCRIPTION

Rectangular in plan, the two-story adobe and stucco building located on an alley has a low-pitched gabled roof of corrugated metal. The building was extended to the west after 1922. On the first floor of the main (south) facade, the two-panel, four-light door is offset to the west. Four rectangular double-hung windows on this facade, two on each floor, are set into wood frames in the adobe walls. A door on the second floor at the east end of the front facade opened onto a second floor veranda or stair which has been removed. The addition on the west has a single small square window in the first floor and a large rectangular double hung window on the second. At the rear of the building, a wood stairway leads to the second floor entrance at the west end. Remaining windows in the building are individually-placed double-hung in wood frames. A one-story rectangular wing intersects the west addition and has a low-pitched gable roof and single front entry with sidelights. Windows are small and square. The building is in disrepair with areas of exposed adobe.

STATEMENT OF SIGNIFICANCE/HISTORY

This two-story adobe building is representative of the commercial structures in Casa Grande after the turn of the century. Little is known at the present about the history of the building, but it can be suggested that the building may have been originally a residence or rooming house before conversion to commercial use.

The simplicity of construction of this building brings merit to its character. Although the structure is in a deteriorated state, the original adobe work, wood double-hung windows, and lintels remain intact.

SOURCES OF ABOVE INFORMATION/BIBLIOGRAPHY

GEOGRAPHICAL DATA/LEGAL DESCRIPTION/VERBAL BOUNDARY DESCRIPTION

West 8' of the S 38' of Lot 2 and all of Lot 3 except the East 3' of the North 102' portion--First Addition to Casa Grande.

GENERAL COMMENTS/FUTURE PLANS FOR PROPERTY

ARIZONA STATE HISTORIC PROPERTY INVENTORY

HISTORIC PROPERTY NAME Gus Kratzka House		COUNTY Pinal County	INVENTORY NO. CG-126
COMMON PROPERTY NAME Gus Kratzka House		QUAD/COUNTY MAP	
PROPERTY LOCATION-STREET & NO. North Maricopa and 3rd Street			
CITY, TOWN/VICINITY OF Casa Grande		ASSESSOR'S PARCEL NO. 507-07-032	
OWNER OF PROPERTY Millard E. Jernigan		PHONE	
STREET & NO./P.O. BOX P. O. Box 1311			
CITY, TOWN Casa Grande,		STATE Arizona	ZIP 85222
FORM PREPARED BY Janus Associates Inc.		DATE 9/82	
STREET & NO./P.O. BOX 2121 South Priest Suite 127		PHONE 967-7117	
CITY, TOWN Tempe,		STATE Arizona	ZIP 85282
PHOTO BY Casa Grande Survey Volunteer		DATE June 1982	
VIEW looking east			
HISTORIC USE residence			
PRESENT USE residence		ACREAGE less/one	
ARCHITECT/BUILDER			
CONSTRUCTION/MODIFICATION DATES Built 1929			



PHYSICAL DESCRIPTION

The Gus Kratzka House is a large single-story bungalow of rusticated concrete block construction, with a medium-pitched gable roof covered with composition shingles. The broad over-hanging roof has exposed eaves and the gable end of the main facade is bracketed. The building features a full-length open porch with rusticated concrete block walls, and low square piers at the porch entry and block support piers at the corners. The gable end of the porch is stuccoed and is tapered with a central peak. Stuccoed side walls of the porch form an arch. A rectangular five-light window with lattice ventilator above is located beneath the gable. A steeply pitched gable dormer rests on the west slope. The rear (south) portion of the roof is hipped with a latticed gable. Three-light windows on the main facade flank the offset single-leaf, three-light panelled door. Side windows are covered with screen. On the south facade are two iron-grilled windows, a single-leaf central door and two small windows. The house is exceptionally well-maintained. A modern concrete block out-structure with a gabled roof is behind the main structure.

STATEMENT OF SIGNIFICANCE/HISTORY

The Gus Kratzka House is an outstanding example of a bungalow executed in rusticated cast concrete. Built in 1929, the house has been exceptionally well-maintained and exhibits major bungalow design features. An unusual interior feature of the house when built was a "California cooler", a cupboard connected to the basement to provide a cooled place for foods.

Gustav Kratzka was a German immigrant who opened the Berlin Bakery and Cafe in Casa Grande in 1912, in addition to farming 720 acres west of town. He rebuilt his bakery and restaurant after the 1914 fire, and retired in 1928. During this period, he was elected a director of the Casa Grande Valley Water Users' Association, organized a brass band, and bred Percheron horses.

The Kratzka House, with its stylistic qualities and its well-maintained condition, makes a positive contribution to the overall character of the surrounding neighborhood.

SOURCES OF ABOVE INFORMATION/BIBLIOGRAPHY

Casa Grande Valley Historical Society newspaper index
Casa Grande Valley Historical Society history files

GEOGRAPHICAL DATA/LEGAL DESCRIPTION/VERBAL BOUNDARY DESCRIPTION

Lots 1, 2, 3, Block 6, Casa Grande Townsite

GENERAL COMMENTS/FUTURE PLANS FOR PROPERTY

ARIZONA STATE HISTORIC PROPERTY INVENTORY

HISTORIC PROPERTY NAME C. J. "Blinky" Wilson House	
COMMON PROPERTY NAME	
PROPERTY LOCATION-STREET & NO. 223 West 10th	
CITY, TOWN/VICINITY OF Casa Grande	ASSESSOR'S PARCEL NO. 506-07-133
OWNER OF PROPERTY Nelly Galloway-Hensley	PHONE
STREET & NO./P.O. BOX 223 West 10th	
CITY, TOWN Casa Grande,	STATE Arizona
ZIP 85222	
FORM PREPARED BY Janus Associates Inc.	DATE 9/82
STREET & NO./P.O. BOX 2121 South Priest Suite 127	PHONE 967-7117
CITY, TOWN Tempe,	STATE Arizona
ZIP 85282	
PHOTO BY Janus Associates Inc.	DATE Feb. 1982
VIEW looking south	
HISTORIC USE residence	
PRESENT USE residence	ACREAGE less/one
ARCHITECT/BUILDER Contractor: Doak of Casa Grande Architect: San Leandro, Calif., co. plans	
CONSTRUCTION/MODIFICATION DATES Built 1929-30, Modifications 1930-1940	

COUNTY
Pinal County

INVENTORY NO.
CG-128



PHYSICAL DESCRIPTION

The C. J. "Blinky" Wilson house is a one-and two-story adobe building in Spanish Colonial Revival style faced with stucco. It has low-pitched gabled red tile roofs with open eaves. A single-story addition has a flat roof trimmed with red tiles. A major feature of the house is a two-story tower on the northeast corner with hipped roof covered with red tiles. A balcony supported by four brackets projects from the second story front facade, reached through double French doors. The balcony tiled shed roof is supported by corbelled columns connected by a lattice railing. The east facade is broken by uniform double four-over-four light windows on the first and second floors. The house is almost completely hidden behind dense vegetation, but appears to be in excellent condition.

STATEMENT OF SIGNIFICANCE/HISTORY

The C. J. Wilson House, built in 1929 - 1930, is significant for its integrity and Spanish Colonial Revival detailing and style. The adobe bricks for the two-story building were made on the site by Mexican labor. The carpenter in charge was C. B. Cosner. Mr. Doak also worked on the home's construction. The original house consisted of six rooms and a basement. Plans were ordered from Los Angeles through the Halstead Lumber Company. The Spanish Colonial Revival styling of the house is evidenced in the red tile roof and lattice-framed balcony. The house is in excellent condition and exemplifies the period revival styles being built in Casa Grande at that time.

C. J. "Blinky" Wilson is a well-known Casa Grande businessman. He began in business in Casa Grande in 1912 - 1913 with his father and brother. The family owned an automobile dealership and auto repair shop. After the father's death in 1934, the Wilson brothers continued the business. In 1947, C. J. Wilson opened another auto dealership built to resemble a boat, named the S. S. Blinky Jr. Wilson retired in 1979. Wilson lived in this house from 1930 to 1940.

SOURCES OF ABOVE INFORMATION/BIBLIOGRAPHY

Casa Grande Valley Historical Society newspaper index files.
Interview: C. J. Wilson--September 1, 1982

GEOGRAPHICAL DATA/LEGAL DESCRIPTION/VERBAL BOUNDARY DESCRIPTION

Lots 5 and 6, Block 14, First Addition to Casa Grande

GENERAL COMMENTS/FUTURE PLANS FOR PROPERTY

ARIZONA STATE HISTORIC PROPERTY INVENTORY

HISTORIC PROPERTY NAME Stone Bungalow		COUNTY Pinal County	INVENTORY NO. CG-131
COMMON PROPERTY NAME		QUAD/COUNTY MAP	
PROPERTY LOCATION-STREET & NO. 515 East 3rd Street			
CITY, TOWN/VICINITY OF Casa Grande		ASSESSOR'S PARCEL NO. 507-07-349	
OWNER OF PROPERTY Gail Sherbondy		PHONE	
STREET & NO./P.O. BOX 515 East 3rd Street			
CITY, TOWN Casa Grande		STATE Arizona	ZIP 85222
FORM PREPARED BY Janus Associates Inc.		DATE 9/82	
STREET & NO./P.O. BOX 2121 South Priest Suite 127		PHONE 967-7117	
CITY, TOWN Tempe,		STATE Arizona	ZIP 85282
PHOTO BY Casa Grande Survey Volunteer		DATE June 1982	
VIEW looking south			
HISTORIC USE residence			
PRESENT USE residence		ACREAGE less/one	
ARCHITECT/BUILDER			
CONSTRUCTION/MODIFICATION DATES Built c. 1921			



PHYSICAL DESCRIPTION

This small, one-story bungalow is built of stone and exhibits several Craftsman design features. The gabled medium-pitched roof has two low shed dormers toward the front of the house. A porch extends the length of the house and is characterized by low stone walls capped with concrete. Similar stone walls at the base of the stoop extend along the entry sidewalk. The porch shed roof has open eaves and is supported by truncated boxed wood columns which rest on the porch walls. There is a stone chimney on the west facade adjacent to a shed carport. Front windows are triplet, three-over-one light, wood casement, one placed on each side of the central entry. Other windows are smaller three-over-one light casement. All windows are wood frame.

STATEMENT OF SIGNIFICANCE/HISTORY

The house at 515 East 3rd Street is unusual for its construction material in combination with its building style. The building is of native stone and retains many Craftsman design features. The quality of workmanship is apparent and the house has been little modified. The well-maintained building makes a unique and qualitative contribution to the architectural fabric of the neighborhood.

SOURCES OF ABOVE INFORMATION/BIBLIOGRAPHY

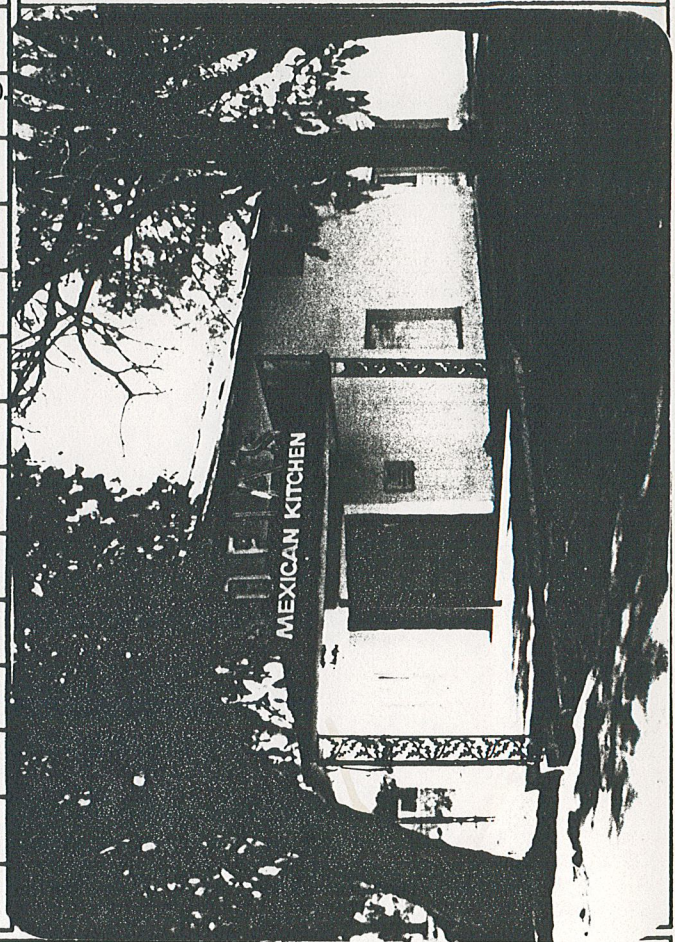
GEOGRAPHICAL DATA/LEGAL DESCRIPTION/VERBAL BOUNDARY DESCRIPTION

Lots 4 and 5, Block 1, Casa Grande Townsite

GENERAL COMMENTS/FUTURE PLANS FOR PROPERTY

ARIZONA STATE HISTORIC PROPERTY INVENTORY

HISTORIC PROPERTY NAME Johnson's Grocery Store		COUNTY Pinal County	INVENTORY NO. CG-133
COMMON PROPERTY NAME Sofia's Mexican Kitchen		QUAD/COUNTY MAP	
PROPERTY LOCATION-STREET & NO. 301 North Picacho			
CITY, TOWN/VICINITY OF Casa Grande		ASSESSOR'S PARCEL NO. 507-07-198	
OWNER OF PROPERTY Joseph Revak		PHONE	
STREET & NO./P.O. BOX 311 Orange Drive			
CITY, TOWN Casa Grande,		STATE Arizona	ZIP 85222
FORM PREPARED BY Janus Associates Inc.		DATE 9/82	
STREET & NO./P.O. BOX 2121 South Priest Suite 127		PHONE 967-7117	
CITY, TOWN Tempe,		STATE Arizona	ZIP 85282
PHOTO BY Casa Grande Survey Volunteer		DATE June 1982	
VIEW looking southeast			
HISTORIC USE commercial			
PRESENT USE commercial		ACREAGE less/one	
ARCHITECT/BUILDER			
CONSTRUCTION/MODIFICATION DATES Built c. 1907			



PHYSICAL DESCRIPTION

This rectangular plan gabled-roofed building is one and one-half stories tall with a basement. Oriented to a corner, the building has a modified diagonal entry supported by one pipe column. A late L-shaped porch supported by grilled ironwork columns extends from the entry. A flat-roofed L-shaped addition extends across the rear. The north facade has two original openings each having two double-hung windows. The west facade has two infilled windows and a three-panel/four-light door. Vents are located at the top of each gabled end. Two small windows are located high on the east and west facades. The interior was altered after a fire in 1957. Mature tamarisk trees dominate the site.

STATEMENT OF SIGNIFICANCE/HISTORY

Built around 1907, this commercial building is significant for use of adobe, which is rare for commercial use at the time of its construction. The building first served as a grocery store until 1932, first operated by J. G. Johnson and then Wong Hong Chin. From 1940 to 1955, the building was occupied by the city's first do-it-yourself laundry. A catering service from 1958 to 1960 was followed by the current Mexican food restaurant. Despite the years of continued use, the building is relatively unchanged on the exterior. Remodeling after a fire in 1957 altered the interior.

SOURCES OF ABOVE INFORMATION/BIBLIOGRAPHY

Casa Grande Valley Historical Society newspaper index files
Interview: Christine Burton--July 30, 1982

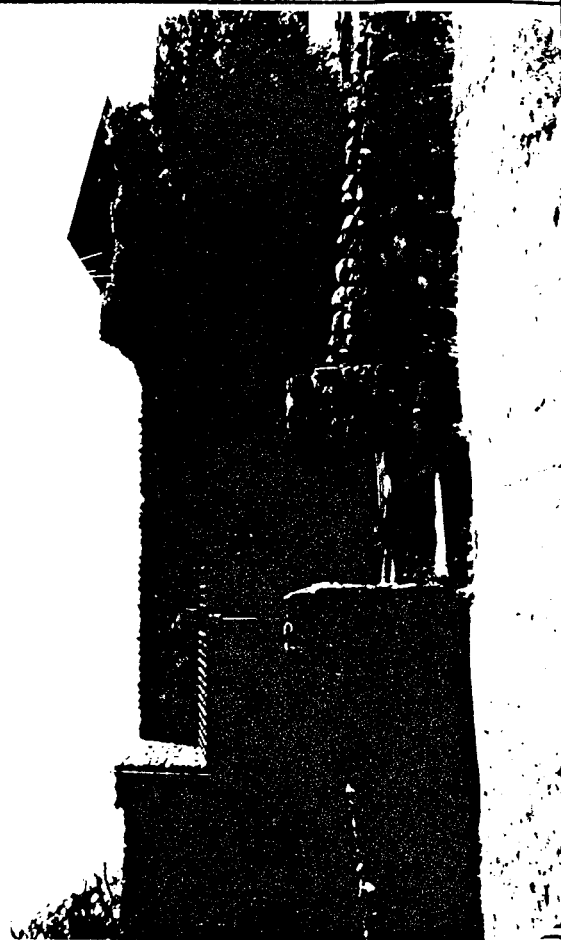
GEOGRAPHICAL DATA/LEGAL DESCRIPTION/VERBAL BOUNDARY DESCRIPTION

Lot 1, Block 34, Casa Grande Townsite

GENERAL COMMENTS/FUTURE PLANS FOR PROPERTY

ARIZONA STATE HISTORIC PROPERTY INVENTORY

HISTORIC PROPERTY NAME Fisher Memorial Home		COUNTY Pinal County	INVENTORY NO. CG-134
COMMON PROPERTY NAME Fisher Memorial Home		QUAD/COUNTY MAP	
PROPERTY LOCATION-STREET & NO. 300 East 8th Street			
CITY, TOWN/VICINITY OF Casa Grande		ASSESSOR'S PARCEL NO. 506-07-340	
OWNER OF PROPERTY Jim McClelland		PHONE 505-836-7587	
STREET & NO./P.O. BOX 1015 Glade Lane #80			
CITY, TOWN Farmington,		STATE New Mexico	ZIP 87401
FORM PREPARED BY Janus Associates Inc.		DATE 9/82	
STREET & NO./P.O. BOX 2121 South Priest Suite 127		PHONE 967-7117	
CITY, TOWN Tempe,		STATE Arizona	ZIP 85282
PHOTO BY Casa Grande Survey Volunteer		DATE June 1982	
VIEW looking east			
HISTORIC USE commercial			
PRESENT USE commercial		ACREAGE less/one	
ARCHITECT/BUILDER			
CONSTRUCTION/MODIFICATION DATES Built 1927, modified 1929			



PHYSICAL DESCRIPTION

The Fisher Memorial Home is a single-story U-shaped structure constructed of uncoursed field stone. A flat parapeted roof and lower tile-roofed portal infilling the U shape suggest a Pueblo Revival influence. A three-story tower addition of wood frame and shingles extends from the northeast corner. It has a low sloping pyramidal roof of wood shingles. Dual orientation is to the south and west bordering streets. The south facade, protected by the single stone pier portal, has relief plaque decorated doors defining symmetrical entries. Small tile-roofed porticos protect two symmetrical, two-leaf French doors on the west facade. Windows of the original structure are wood four-over-one light double-hung. The addition wood windows are double-hung fixed glass, and symmetrically placed. An additional feature is a low entry wall of stone sloping up to an opening flanked by two square pillars, each a base for a lamp post.

STATEMENT OF SIGNIFICANCE/HISTORY

The Fisher Memorial Home is an outstanding example of a period revival residential/commercial building executed in local materials. Its unique uncoursed field stone construction and Pueblo Revival influenced design once brought it to public acclaim as one of the finest and most beautiful houses in the Casa Grande Valley. The house is well-maintained and has a high degree of integrity.

The combination house/funeral home was built in Casa Grande in 1927. Harry L. Fisher and his wife Mary established a mortuary business in Casa Grande after their arrival in 1919. Fisher was killed in 1925. Mrs. Fisher trained as an undertaker, married William Plenz and opened the Fisher Memorial Home in its new location. Mrs. Plenz was a respected businesswoman for many years in Casa Grande.

SOURCES OF ABOVE INFORMATION/BIBLIOGRAPHY

Casa Grande Valley Historical Society newspaper index files
Casa Grande Valley Historical Society history files

GEOGRAPHICAL DATA/LEGAL DESCRIPTION/VERBAL BOUNDARY DESCRIPTION

Lots 7-12, Block 6, E. P. Drew Subdivision

GENERAL COMMENTS/FUTURE PLANS FOR PROPERTY

ARIZONA STATE HISTORIC PROPERTY INVENTORY

HISTORIC PROPERTY NAME Earl Bayless House	
COMMON PROPERTY NAME	
PROPERTY LOCATION-STREET & NO. 211 North Cameron	
CITY,TOWN/VICINITY OF Casa Grande	ASSESSOR'S PARCEL NO. 507-06-028
OWNER OF PROPERTY Lois Myrtle Schoonover	PHONE
STREET & NO./P.O. BOX Box 712	
CITY,TOWN Casa Grande,	STATE Arizona
ZIP 85222	
FORM PREPARED BY Janus Associates Inc.	DATE
STREET & NO./P.O. BOX 2121 S. Priest Suite 127	PHONE 967-7117
CITY,TOWN Tempe,	STATE Arizona
ZIP 85282	
PHOTO BY Casa Grande Survey Volunteer	DATE 6/82
VIEW looking west	
HISTORIC USE residence	
PRESENT USE residence	ACREAGE less/one
ARCHITECT/BUILDER	
CONSTRUCTION/MODIFICATION DATES Built 1922	



PHYSICAL DESCRIPTION

The Bayless house is a small, square plan single-story dwelling constructed of rusticated concrete block. Its design has a strong bungalow influence. Typical bungaloid features are a gabled roof surmounting the main structure, a lower gabled porch extending almost full width along the front facade and ridge lines that are perpendicular to the street. Large square stuccoed piers on rusticated block bases support the front porch roof. All roofs are asphalt shingled with deep overhangs and open eaves. Gable ends have vents constructed of vertical trim. A rear wing is constructed above grade of rusticated concrete block base and wood siding. The addition has a partial truncated pyramidal roof of asphalt shingles. Front facade wood double-hung windows flank a central front door. Other windows of the same type are randomly placed. The rear wing fenestration appears to be a high single band of screened fixed glass windows. A special feature is a central stone chimney.

STATEMENT OF SIGNIFICANCE/HISTORY

This bungalow was built in 1922 by Earl Bayless, a Casa Grande businessman. During the 1920s he owned a Chevrolet dealership and auto repair shop and the DeLux Auto Court. Mrs. Bayless served Casa Grande as a Registered Nurse, operator of the Sacaton Hotel, and as Pinal County Recorder.

This basically unaltered building is a well-maintained example of a bungalow-influenced design using rusticated concrete block. Its symmetrical design combined with twin porch and main roofs with extended purlins and gable end vents defines an architectural integrity of high quality in Casa Grande's residential design history.

SOURCES OF ABOVE INFORMATION/BIBLIOGRAPHY

Casa Grande Valley Historical Society newspaper index files
Casa Grande Valley Historical Society photo and history files

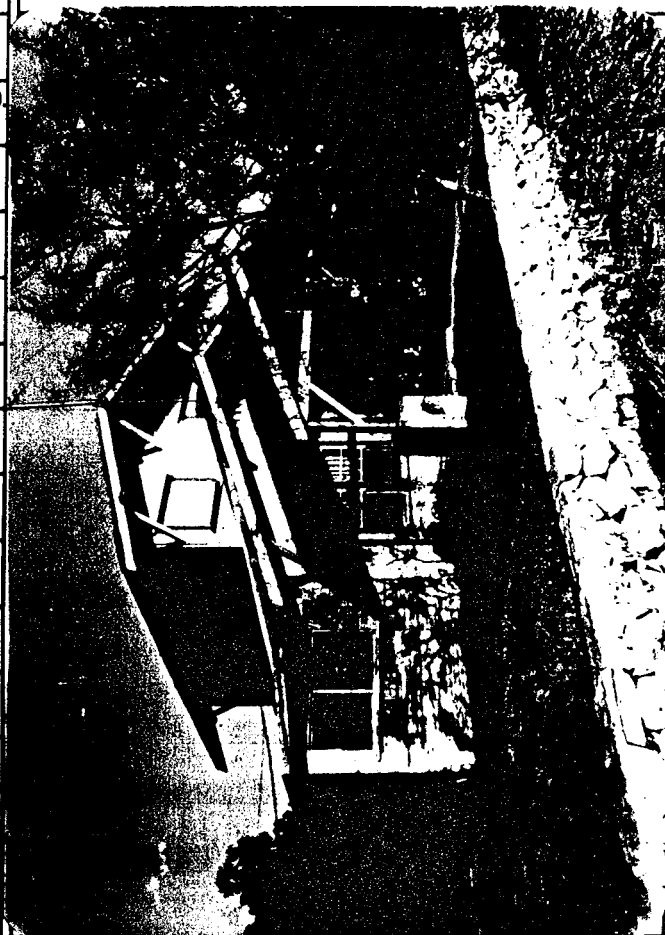
GEOGRAPHICAL DATA/LEGAL DESCRIPTION/VERBAL BOUNDARY DESCRIPTION

Lots 8 and 9, Block 4, Myers first addition.

GENERAL COMMENTS/FUTURE PLANS FOR PROPERTY

ARIZONA STATE HISTORIC PROPERTY INVENTORY

HISTORIC PROPERTY NAME Wilbur O. Bayless/Grasty House		COUNTY Pinal County	INVENTORY NO. CG-138
COMMON PROPERTY NAME		QUAD/COUNTY MAP	
PROPERTY LOCATION-STREET & NO. 221 North Cameron			
CITY, TOWN/VICINITY OF Casa Grande		ASSESSOR'S PARCEL NO. 507-06-027	
OWNER OF PROPERTY Malcolm J. Lytle		PHONE	
STREET & NO./P.O. BOX 221 North Cameron			
CITY, TOWN Casa Grande,		STATE Arizona	ZIP 85222
FORM PREPARED BY Janus Associates Inc.		DATE 9/82	
STREET & NO./P.O. BOX 2121 South Priest Suite 127		PHONE 967-7117	
CITY, TOWN Tempe,		STATE Arizona	ZIP 85282
PHOTO BY Casa Grande Survey Volunteer		DATE June 1982	
VIEW looking northwest			
HISTORIC USE residence			
PRESENT USE residence		ACREAGE less/one	
ARCHITECT/BUILDER			
CONSTRUCTION/MODIFICATION DATES Built early 1920s, addition at rear 1950s			



PHYSICAL DESCRIPTION

This two-story rectangular plan dwelling has an interesting Bungalow design. Gabled roofs are perpendicular to the front facade. A low gabled front porch extends full width along the front facade supported by two wood posts with large masonry bases. A single-story shed-roofed addition joins the east facade. All construction appears to be of wood and sheathed in shiplap siding. Two six-over-one light wood double-hung windows are symmetrical about a central front door. Other random windows are two-leaf eight-light wood casement and new windows are aluminum. Diagonal wood braces support the large open eaves. Ventilation screens are located at gable heads. A low random rubble stone wall runs along the perimeter of the site. Addition walls and partial second-story surfaces are in need of maintenance.

STATEMENT OF SIGNIFICANCE/HISTORY

Wilbur O. Bayless built this house in the early 1920's. It is likely that the house was a rental property called Bayless' Aeroplane Apartments, until purchased by Emmett C. Grasty in 1930. Grasty owned the Grasty Implement Co., with stores in Casa Grande and Coolidge, and sold out to the O. S. Stapley Co. in 1943. He had been at one time publisher of the Casa Grande Valley Dispatch and served in many civic capacities, including a four-year term on the City Council. Grasty had also been one of the founders of the Children's Home in Tucson and was known for his philanthropies.

SOURCES OF ABOVE INFORMATION/BIBLIOGRAPHY

Casa Grande Valley Historical Society newspaper index files
Casa Grande Valley Historical Society history and photo files
Interview: Emmett Grasty, Jr.--August 31, 1982

GEOGRAPHICAL DATA/LEGAL DESCRIPTION/VERBAL BOUNDARY DESCRIPTION

Lot 7, Block 4, Myers 1st addition

GENERAL COMMENTS/FUTURE PLANS FOR PROPERTY

ARIZONA STATE HISTORIC PROPERTY INVENTORY

HISTORIC PROPERTY NAME		COUNTY	INVENTORY NO.
COMMON PROPERTY NAME		Pinal County	CG-142
White House		QUAD/COUNTY MAP	
PROPERTY LOCATION-STREET & NO. 901 North Morrison			
CITY,TOWN/VICINITY OF		ASSESSOR'S PARCEL NO.	
Casa Grande		506-08-022	
OWNER OF PROPERTY		PHONE	
Marie White (deceased)			
STREET & NO./P.O. BOX Rt. 1, Box 325			
CITY,TOWN		STATE	ZIP
Eloy		Arizona	
FORM PREPARED BY		DATE	
Janus Associates Inc.		9/82	
STREET & NO./P.O. BOX		PHONE	
2121 S. Priest Suite 127		967-7117	
CITY,TOWN		STATE	ZIP
Tempe		Arizona	85282
PHOTO BY		DATE	
Casa Grande Survey Volunteer		June 1982	
VIEW looking northwest			
HISTORIC USE residence			
PRESENT USE		ACREAGE	
residence		less/one	
ARCHITECT/BUILDER			
CONSTRUCTION/MODIFICATION DATES c. 1929			



PHYSICAL DESCRIPTION

The White House is a one-story irregularly shaped house in Tudor Revival style. Its most distinguished features include a steep double pitched roof which bellcasts over the front porch. An offset gable projects from the south face and a chimney rises between this wing and the main house. Adjacent to the central porch is another wing with a gable roof; the gable end is sheathed in shiplap siding. The three north/south gables are half timbered with stucco with vertical board framing characteristic of the Tudor style. The porch roof is supported by three pairs of flared wood posts resting on the concrete porch. Two wings have been added at the rear of the house to make a U-shape. Each rectangular wing has a hip roof and large three eight-light windows centrally placed. The south wing has a single leaf side entry reached by a double step. A triangular dormer on the roof of the house between the additions has been filled with an air conditioning unit.

STATEMENT OF SIGNIFICANCE/HISTORY

The White House is significant as a good example of a Tudor Period Revival House. Believed to be built around 1929, the house has retained many of its original stylistic qualities. The double addition at the rear does not detract from its overall stylistic impression. The house has been well maintained and little modified. It can be considered representative of the period revival houses being built in Evergreen Addition during the late 1920s--early 1930s.

J. W. White was a long-time Casa Grande resident who started the J. W. White Electrical Company in 1922.

SOURCES OF ABOVE INFORMATION/BIBLIOGRAPHY

GEOGRAPHICAL DATA/LEGAL DESCRIPTION/VERBAL BOUNDARY DESCRIPTION

Lot 8, Block 10, Evergreen Addition

GENERAL COMMENTS/FUTURE PLANS FOR PROPERTY

ARIZONA STATE HISTORIC PROPERTY INVENTORY

HISTORIC PROPERTY NAME Dr. H. B. Lehmberg House		COUNTY Pinal County	INVENTORY NO. CG-144
COMMON PROPERTY NAME Dr. H. B. Lehmberg House		QUAD/COUNTY MAP	
PROPERTY LOCATION-STREET & NO. 929 North Lehmberg			
CITY, TOWN/VICINITY OF Casa Grande		ASSESSOR'S PARCEL NO. 506-09-029	
OWNER OF PROPERTY Joe Turner et ux		PHONE	
STREET & NO./P.O. BOX 929 North Lehmberg			
CITY, TOWN Casa Grande,		STATE Arizona	ZIP 85222
FORM PREPARED BY Janus Associates Inc.		DATE 9/82	
STREET & NO./P.O. BOX 2121 South Priest Suite 127		PHONE 967-7117	
CITY, TOWN Tempe,		STATE Arizona	ZIP 85282
PHOTO BY Casa Grande Survey Volunteer		DATE June 1982	
VIEW looking southwest			
HISTORIC USE residence			
PRESENT USE residence		ACREAGE less/one	
ARCHITECT/BUILDER			
CONSTRUCTION/MODIFICATION DATES Built 1929			



PHYSICAL DESCRIPTION

The Lehmberg House is a single-story, irregularly-shaped adobe structure with Spanish Colonial Revival stylistic influence. Characteristic of this style, it has red tiled roofs, rectangular casement windows with wood lintels, and a stuccoed exterior. Intersecting gables comprise the main roof form. A square tower extends to the southeast having a pyramidal roof. Extending from the northeast appears to be an open-eaved flat-roofed porch of wood construction. An addition of Pueblo Revival influence extends to the north. It has a flat roof and single story walls with parapets. A flat roofed garage with wood siding is part of the north addition. A special feature is a large central Mexican style adobe fireplace with a stuccoed chimney.

STATEMENT OF SIGNIFICANCE/HISTORY

Built in 1929, the Lehmborg House retains its original stylistic features and qualities and is a good example of the period revival Spanish Colonial houses in the Evergreen Addition during that period.

The house is noted for its association with its original owner, Dr. H. B. Lehmborg, who came to Casa Grande in 1927. By 1928, Dr. Lehmborg had established a small hospital which received community-wide support. He served Casa Grande for 28 years, until his retirement in 1955. The Lehmborgs also built various commercial buildings in the city including the Dispatch Building, the Revco Building and the Truly Nolan Building. Dr. Lehmborg died in Casa Grande in 1977.

The house is in excellent condition and contributes to the cohesion of the neighborhood.

SOURCES OF ABOVE INFORMATION/BIBLIOGRAPHY

Casa Grande Valley Historical Society newspaper index files
Interview: Mrs. H. B. Lehmborg--September 15, 1982

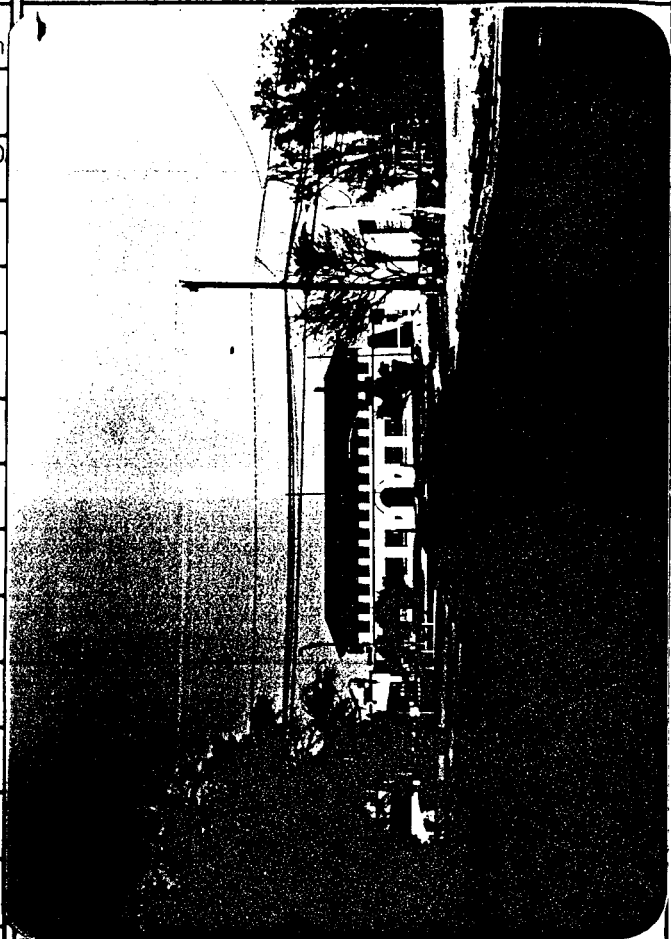
GEOGRAPHICAL DATA/LEGAL DESCRIPTION/VERBAL BOUNDARY DESCRIPTION

Lots 1 and 2, Block 25, Evergreen Addition

GENERAL COMMENTS/FUTURE PLANS FOR PROPERTY

ARIZONA STATE HISTORIC PROPERTY INVENTORY

HISTORIC PROPERTY NAME Casa Grande Union High School and Gymnasium		COUNTY Pinal County	INVENTORY NO. 146
COMMON PROPERTY NAME Casa Grande Union High School and Gymnasium			
PROPERTY LOCATION-STREET & NO. 420 East Florence Blvd.			
CITY, TOWN/VICINITY OF Casa Grande		ASSESSOR'S PARCEL NO. 506-07-348	
OWNER OF PROPERTY Pinal Co. School District 82		PHONE	
STREET & NO./P.O. BOX			
CITY, TOWN Florence,	STATE Arizona	ZIP	
FORM PREPARED BY Janus Associates Inc.		DATE 9/82	
STREET & NO./P.O. BOX 2121 South Priest Suite 127		PHONE 967-7117	
CITY, TOWN Tempe,	STATE Arizona	ZIP 85282	
PHOTO BY Casa Grande Survey Volunteer		DATE June 1982	
VIEW looking north			
HISTORIC USE school			
PRESENT USE school		ACREAGE	
ARCHITECT/BUILDER J. J. Garfield Contractor Lyman & Place Architect/high school			
CONSTRUCTION/MODIFICATION DATES G. F. Fergus, Built 1921 Gym built 1936			



PHYSICAL DESCRIPTION

The large, two-story with basement school is rectangular in plan and Spanish Colonial Revival in design. Characteristic of this style, the building has a red clay tile roof, a decorative plastered and arched entry portal, arched window openings, and ironwork balconets. The walls are stuccoed, with a mansard roof and bracketed boxed eaves. Two symmetrical wings flank the main structure. The wings feature projecting entry walls topped by a scrolled coping that rises to form a decorative parapet hood. The wings each have large central arched entries. A non-original circular fountain is located in front of the main entry. The first floor of the main structure has large windows with ironwork balconets, original ten-light, two-leaf casement windows with five-pane sidelights and six-light transoms. These windows have been modified with steel frame pivoting windows. A band of arched windows extends the width of the second floor and have also been modified, but retain their original eight-light radiating transoms. A band course separates the first and second floor at the sill height. A gymnasium, 116-ft. x 61 ft., built of large-sized adobes, was later added along the rear of the high school, together with miscellaneous out-buildings. The rectangular plan gym has a barrel-vaulted metal roof. Seven rectangular windows are placed in the rear gym wall. The main structure and gym are relatively unmodified and are well-maintained.

STATEMENT OF SIGNIFICANCE/HISTORY

Built in 1920-1921 at a cost of \$135,000, the Casa Grande Union High School main building is a good example of a Spanish Colonial Revival public building. The school, built in response to the growing student population of Casa Grande, was complete with indoor swimming pool and auditorium.

The construction of such a large high school building was a milestone for the small community of Casa Grande. The building, with its high visibility, rises above the city, making it a local landmark.

The Casa Grande Union High School gymnasium, built in 1936, is the only known adobe gymnasium in Arizona. The gym cost over \$12,000, \$7200 of which was supplied by the WPA. Adobe manufacturing for the gym walls created much needed jobs in Casa Grande's deflated economy during the depression years. On-site earth was used to make the 30,000 adobe bricks used in the construction.

SOURCES OF ABOVE INFORMATION/BIBLIOGRAPHY

Casa Grande Valley Historical Society newspaper index files

Casa Grande Valley Historical Society history and photo files

GEOGRAPHICAL DATA/LEGAL DESCRIPTION/VERBAL BOUNDARY DESCRIPTION

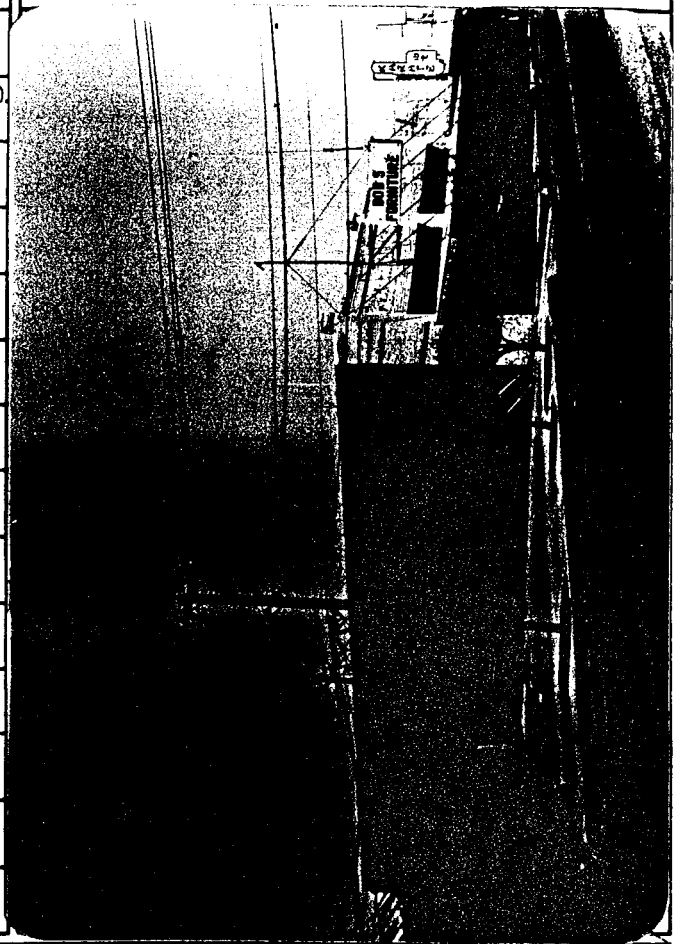
portion of the SE $\frac{1}{4}$, of the SW $\frac{1}{4}$ and a portion of the SW $\frac{1}{4}$ of the SE $\frac{1}{4}$ of Section 20, T6S, R6E. 14.10 acres.

GENERAL COMMENTS/FUTURE PLANS FOR PROPERTY

ARIZONA STATE HISTORIC PROPERTY INVENTORY

HISTORIC PROPERTY NAME Pioneer Market	
COMMON PROPERTY NAME Bob's Furniture	
PROPERTY LOCATION-STREET & NO. 119 Florence Street	
CITY,TOWN/VICINITY OF Casa Grande	ASSESSOR'S PARCEL NO. 507-07-072
OWNER OF PROPERTY Charles San Fillipo	PHONE
STREET & NO./P.O. BOX Tucson Highway	
CITY,TOWN Casa Grande,	STATE Arizona
ZIP 85222	
FORM PREPARED BY Janus Associates Inc.	DATE 9/82
STREET & NO./P.O. BOX 2121 South Priest Suite 127	PHONE 967-7117
CITY,TOWN Tempe,	STATE Arizona
ZIP 85282	
PHOTO BY Casa Grande Survey Volunteer	DATE June 1982
VIEW looking northwest	
HISTORIC USE commercial	
PRESENT USE commercial	ACREAGE less/one
ARCHITECT/BUILDER	
CONSTRUCTION/MODIFICATION DATES Built 1922	

COUNTY Pinal County	INVENTORY NO. CG-147
QUAD/COUNTY MAP	



PHYSICAL DESCRIPTION

Pioneer Market is a one-story masonry structure of rectangular plan and massing. The two-bay brick facade is articulated by three pilasters. A three-course cap extends along the perimeter of the parapet. A string course extending between facade bays defines a simple frieze. The building has original commercial fronts below a later canopy. Each storefront bay has a central single glass panel wood door flanked by three-quarter height multilight windows. Plywood panels infill original commercial clerestory windows above the contemporary canopy and are used for signage. Four windows and a door are located on the south facade. The original wood door on the south has a transom and a three-course segmental arch opening.

STATEMENT OF SIGNIFICANCE/HISTORY

Built in the early 1920's, the double bay building at 119 Florence Street is an excellent example of brick commercial architecture built during a period of business growth in Casa Grande. Between 1931 and 1957, the north bay was occupied by the Pioneer Market, one of Casa Grande's most frequented grocery stores. The south bay at one time housed a bank, with the vault and tellers' cages remaining intact. The building is relatively unchanged and retains a high degree of integrity. Many original features remain, including wood floors and pressed tin ceilings.

SOURCES OF ABOVE INFORMATION/BIBLIOGRAPHY

Casa Grande Valley Historical Society newspaper index files
Casa Grande Valley Historical Society history files

GEOGRAPHICAL DATA/LEGAL DESCRIPTION/VERBAL BOUNDARY DESCRIPTION

Lots 4 and 7, Block 13, Casa Grande Townsite--50' frontage on Florence Street x 110' and 42' on 1st Street x 101' deep Block 13

GENERAL COMMENTS/FUTURE PLANS FOR PROPERTY

ARIZONA STATE HISTORIC PROPERTY INVENTORY

HISTORIC PROPERTY NAME Stone Warehouse		COUNTY Pinal County	INVENTORY NO. CG-148
COMMON PROPERTY NAME		QUAD/COUNTY MAP	
PROPERTY LOCATION-STREET & NO. 119 Florence Street			
CITY,TOWN/VICINITY OF Casa Grande		ASSESSOR'S PARCEL NO. 507-07-072	
OWNER OF PROPERTY Charles San Fillipo		PHONE	
STREET & NO./P.O. BOX Tucson Highway			
CITY,TOWN Casa Grande,		STATE Arizona	ZIP 85222
FORM PREPARED BY Janus Associates Inc.		DATE 9/82	
STREET & NO./P.O. BOX 2121 South Priest Suite 127		PHONE 967-7117	
CITY,TOWN Tempe,		STATE Arizona	ZIP 85282
PHOTO BY Casa Grande Survey Volunteer		DATE June 1982	
VIEW looking Northwest			
HISTORIC USE warehouse			
PRESENT USE warehouse		ACREAGE less/one	
ARCHITECT/BUILDER Contractor: Mike Sullivan of Casa Grande			
CONSTRUCTION/MODIFICATION DATES Built C. 1922			



PHYSICAL DESCRIPTION

This warehouse is a single-story rectangular building constructed of random field stone. It has a low-pitched corrugated metal hipped roof with a crimped gable. Three square windows are uniformly placed in the east and west facades at the tops of the walls. Bars covering the windows appear to be original. The entry is flanked by two windows symmetrically placed at the top of the facade wall.

STATEMENT OF SIGNIFICANCE/HISTORY

This building is the only stone warehouse in Casa Grande. Built in 1922 by Mike Sullivan, also the contractor for the stone Presbyterian Church and the Woman's Club, the building was used as a warehouse and cooling storage facility by the Pioneer Meat Market, situated on the same property. The building's most unusual feature is a metal roof covered with three feet of dirt and topped with another metal roof. It was reportedly the coolest warehouse in town.

SOURCES OF ABOVE INFORMATION/BIBLIOGRAPHY

Casa Grande Valley Historical Society history files
Interview: Gene Smith

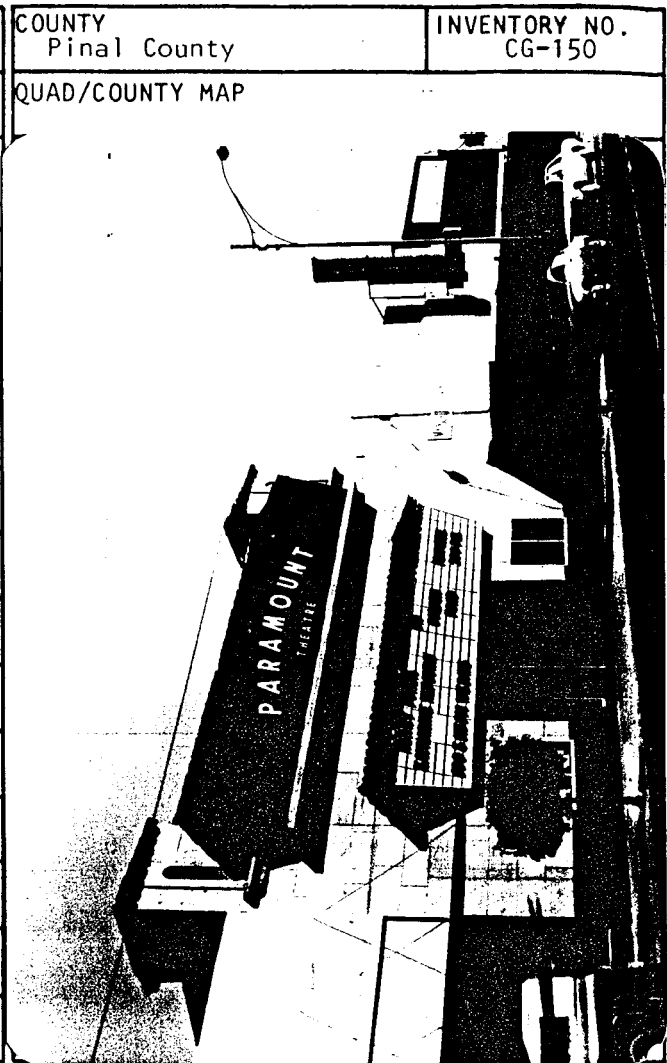
GEOGRAPHICAL DATA/LEGAL DESCRIPTION/VERBAL BOUNDARY DESCRIPTION

Lot 4, Block 13, Casa Grande Townsite

GENERAL COMMENTS/FUTURE PLANS FOR PROPERTY

ARIZONA STATE HISTORIC PROPERTY INVENTORY

HISTORIC PROPERTY NAME Paramount Theatre	
COMMON PROPERTY NAME Paramount Theatre	
PROPERTY LOCATION-STREET & NO. 418 North Florence	
CITY, TOWN/VICINITY OF Casa Grande	ASSESSOR'S PARCEL NO. 507-07-130
OWNER OF PROPERTY Harris Curtis PHONE Long Theatres, Inc./President	
STREET & NO./P.O. BOX P.O. Box 312	
CITY, TOWN Safford,	STATE ZIP Arizona 85546
FORM PREPARED BY Janus Associates Inc.	DATE 9/82
STREET & NO./P.O. BOX 2121 South Priest Suite 127	PHONE 967-7117
CITY, TOWN Tempe,	STATE ZIP Arizona 85282
PHOTO BY Casa Grande Survey Volunteer	DATE June 1982
VIEW looking Southeast	
HISTORIC USE theater	
PRESENT USE theater	ACREAGE less/one
ARCHITECT/BUILDER Builder Harry Nace Theaters-Rickard & Nace	
CONSTRUCTION/MODIFICATION DATES Built 1929 Modified 2x's 1942 and 1967	



PHYSICAL DESCRIPTION

The Paramount Theatre is a large one-story building of rectangular plan constructed of common bond patterned brick on a concrete foundation. The flat roof has parapet walls that step back toward the rear. The scored stucco front facade of Spanish Colonial Revival influence has symmetrical corner towers with pyramidal roofs of red clay tile. A central recessed entry with two-leaf single-light doors is flanked by two later sliding aluminum display windows. Over the entry is a protruding marquee with a clay-tiled shed roof. At the top of the front facade, connecting the two corner towers, is a similar-shaped frieze with the name of the theater. The rear facade is divided into four bays by pilasters. An off-center rear door is recessed and a side door has a three-course segmental arched opening.

STATEMENT OF SIGNIFICANCE/HISTORY

The theater was constructed in 1929 and was considered to be as modern and fine as money could buy. Interior features included velvet curtains and Spanish shawls. H. S. Gilbert of Phoenix was the superintendent of construction and local laborers and tradesmen constructed the building. The theater has served as an entertainment center for Casa Grande for over fifty years. Despite alterations, the building is recognizably Spanish Colonial Revival and retains its original exterior design features. It is a notable landmark in Casa Grande for its continuous operation as a theater since its opening in December of 1929.

SOURCES OF ABOVE INFORMATION/BIBLIOGRAPHY

Casa Grande Valley Historical Society newspaper index files.

GEOGRAPHICAL DATA/LEGAL DESCRIPTION/VERBAL BOUNDARY DESCRIPTION

N 50' of S 59' of Lots 1, 2, 3, 4, part of the W 15' of Lot 5,
Block 20, Casa Grande Townsite

GENERAL COMMENTS/FUTURE PLANS FOR PROPERTY

ARIZONA STATE HISTORIC PROPERTY INVENTORY

HISTORIC PROPERTY NAME Blinky Wilson's "S. S. Blinky Jr."		COUNTY Pinal County	INVENTORY NO. CG-151
COMMON PROPERTY NAME Blinky Wilson's "S. S. Blinky Jr."		QUAD/COUNTY MAP	
PROPERTY LOCATION-STREET & NO. 511 West 2nd Street			
CITY, TOWN/VICINITY OF Casa Grande		ASSESSOR'S PARCEL NO. 504-23-106A	
OWNER OF PROPERTY Robert Brambila		PHONE	
STREET & NO./P.O. BOX 511 West 2nd Street			
CITY, TOWN Casa Grande,		STATE Arizona	ZIP 85222
FORM PREPARED BY Janus Associates Inc.		DATE 9/82	
STREET & NO./P.O. BOX 2121 South Priest Suite 127		PHONE 967-7117	
CITY, TOWN Tempe,		STATE Arizona	ZIP 85282
PHOTO BY Casa Grande Survey Volunteer		DATE June 1982	
VIEW looking Southwest			
HISTORIC USE commercial			
PRESENT USE commercial		ACREAGE less/one	
ARCHITECT/BUILDER architect was inmate of Arizona State Prison			
CONSTRUCTION/MODIFICATION DATES Built 1946-1947			

PHYSICAL DESCRIPTION

The Blinky Wilson "S.S. Blinky Jr." building resembles a ship in name, appearance, and massing. It is oriented with the "bow" pointing east. Basically one story, the running bond stuccoed brick structure has a small central second story that is surrounded by a pipe rail deck. A third story "look-out" balcony cantilevers over the "bow" of the structure. Circular porthole windows surround the building mid-height of the first story. Solid core doors, a two-leaf single-light entry, garage door and a large band of four fixed glass windows are located on the (north) front facade. Special features are a central smoke stack, side anchor and a low iron rail along the facade.

STATEMENT OF SIGNIFICANCE/HISTORY

The "S. S. Blinky Jr." is a building of exceptional merit, unique in style and design and considered a local landmark by Casa Grande citizens. C. J. "Blinky" Wilson, owner of an automobile dealership and repair shop with his father and brothers in Casa Grande since 1912 - 1913, built the "S. S. Blinky Jr." in 1946 - 1947 as a new automobile showroom and dealership. The design was a tribute to his son, who had returned from service on a ship in World War II, and also as a promotional symbol for his new business. The architect was an inmate at the Arizona State Prison. Original decorative features included tires imprinted with the building's name hung as life preservers, a Popeye character on the top, and a bell from the Aleutian Islands. Although these decorative aspects are gone and a repair garage has been added to the end of the building, most of the original design features are intact. These include the showroom, port windows, chimney stack, upper cabin area, and anchor.

SOURCES OF ABOVE INFORMATION/BIBLIOGRAPHY

Casa Grande Valley Historical Society newspaper index files
Casa Grande Valley Historical Society photograph and history files
Interview: C. J. "Blinky" Wilson--September 1, 1982

GEOGRAPHICAL DATA/LEGAL DESCRIPTION/VERBAL BOUNDARY DESCRIPTION

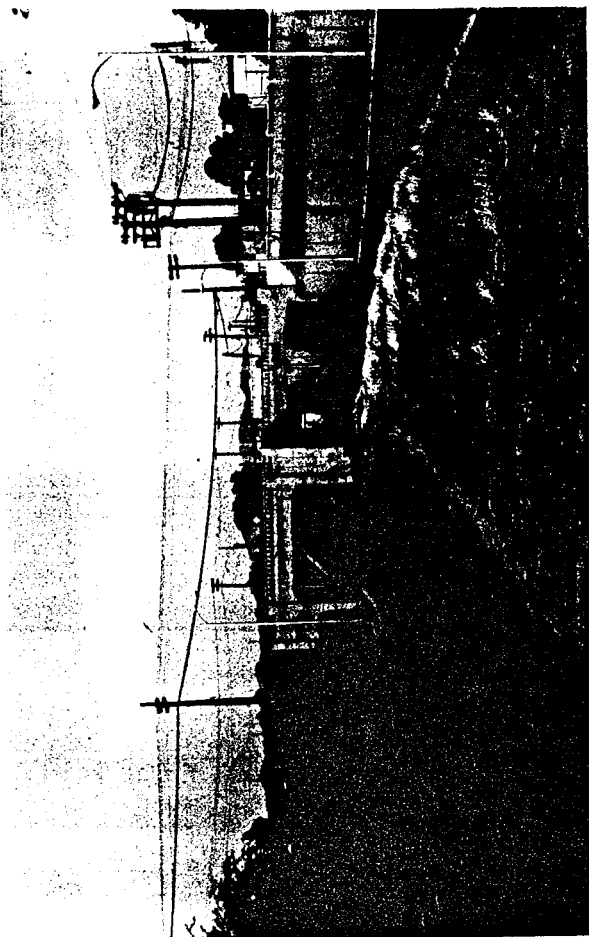
S $\frac{1}{2}$ SE $\frac{1}{4}$ Sec 29, T6S, R6E

GENERAL COMMENTS/FUTURE PLANS FOR PROPERTY

The owner may be planning to sell property.

ARIZONA STATE HISTORIC PROPERTY INVENTORY

HISTORIC PROPERTY NAME Highway 84 Underpass		COUNTY Pinal County	INVENTORY NO. CG-160
COMMON PROPERTY NAME			
PROPERTY LOCATION-STREET & NO.			
CITY, TOWN/VICINITY OF Casa Grande		ASSESSOR'S PARCEL NO.	
OWNER OF PROPERTY AZ Dept. of Transportation		PHONE	
STREET & NO./P.O. BOX			
CITY, TOWN Phoenix,		STATE Arizona	ZIP
FORM PREPARED BY Janus Associates Inc.		DATE 9/82	
STREET & NO./P.O. BOX 2121 South Priest Suite 127		PHONE 967-7117	
CITY, TOWN Tempe,		STATE Arizona	ZIP 85282
PHOTO BY Casa Grande Survey Volunteer		DATE June 1982	
VIEW looking west			
HISTORIC USE underpass			
PRESENT USE underpass		ACREAGE less/one	
ARCHITECT/BUILDER Arizona Department of Transportation			
CONSTRUCTION/MODIFICATION DATES South span 1936, North span 1963			



PHYSICAL DESCRIPTION

The Casa Grande underpass is a reinforced concrete structure with Spanish Colonial Revival detailing. The underpass features two spans. The original 1936 south span is flat with curved wall connections. A pedestrian walkway is separated from the roadway by an arcade. Each arch has reveals at the springline and keystone. Medallions mark the walk portals, flanked by pilasters. The protective balustrade above has arched openings. When the highway was widened in 1963, a new north span was built similar to the original but with a segmental arch span. Approach walls are divided into bays separated with pilasters connected to the balustrades. The lower portions are vertical while the upper portions angle back to the balustrades.

STATEMENT OF SIGNIFICANCE/HISTORY

The Highway 84 underpass in Casa Grande was built in 1936 when the course of the highway passing through the city was altered. The underpass was constructed of concrete from plans drawn by the Arizona Department of Transportation in 1934. The 1963 addition of the north portion matched the original design but eliminated the pedestrian walkway. The curving concrete wall and concrete balustrade design was preserved and continued in the addition. The underpass is significant as the only structure of its type in Casa Grande.

SOURCES OF ABOVE INFORMATION/BIBLIOGRAPHY

Arizona Department of Transportation, Bettina Rosenberg, 10/5/82

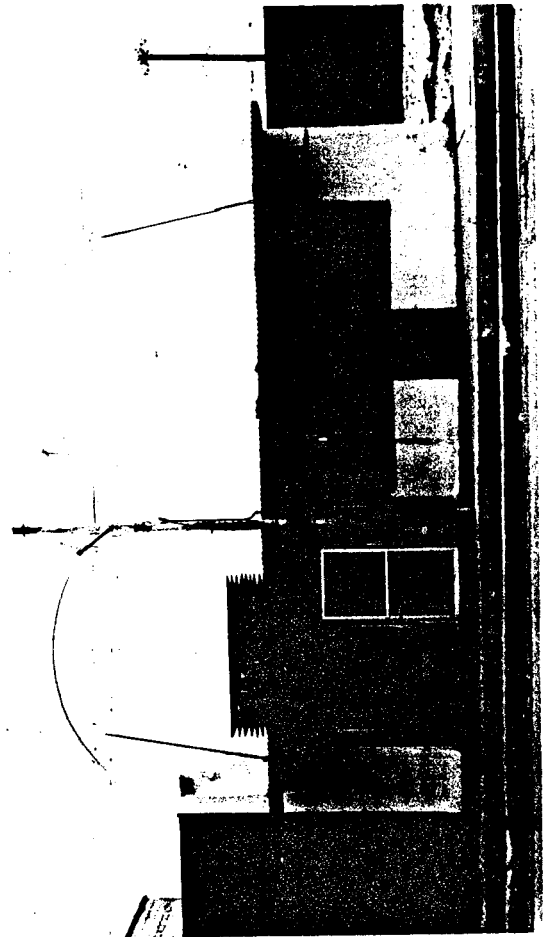
GEOGRAPHICAL DATA/LEGAL DESCRIPTION/VERBAL BOUNDARY DESCRIPTION

Highway 84, Sec 19, T6S, R6E

GENERAL COMMENTS/FUTURE PLANS FOR PROPERTY

ARIZONA STATE HISTORIC PROPERTY INVENTORY

HISTORIC PROPERTY NAME Jeweler Prettyman's Meat Market and Grocery/Brigg's		COUNTY Pinal County	INVENTORY NO. CG-161
COMMON PROPERTY NAME Tee Pee Trading Post			
PROPERTY LOCATION-STREET & NO. 114 West Main Street			
CITY, TOWN/VICINITY OF Casa Grande		ASSESSOR'S PARCEL NO. 507-07-081	
OWNER OF PROPERTY Bill Bowser		PHONE	
STREET & NO./P.O. BOX 1010 North Lehmberg			
CITY, TOWN Casa Grande,		STATE Arizona	ZIP 85222
FORM PREPARED BY Janus Associates Inc.		DATE 9/82	
STREET & NO./P.O. BOX 2121 South Priest Suite 127		PHONE 967-7117	
CITY, TOWN Tempe,		STATE Arizona	ZIP 85282
PHOTO BY Casa Grande Survey Volunteer		DATE June 1982	
VIEW looking north			
HISTORIC USE commercial			
PRESENT USE commercial		ACREAGE	
ARCHITECT/BUILDER			
CONSTRUCTION/MODIFICATION DATES			



PHYSICAL DESCRIPTION

This is a one-story rectangular stuccoed adobe commercial building with a gabled metal roof behind a curved parapet. The two-bay parapet is defined by three pilasters. A flat canopy cantilevers from the parapet midheight of the front facade. Two contemporary bays replace the original storefronts with a T-shaped entry on the east and an aluminum single glass panel door with sidelight and fixed glass square window on one side to the west. A shed gable roofed addition extends from the rear. The east wall bell-curves at the base, the stucco covering the remains of an adjacent wall. Also on the east, a rectangular opening appears to be infilled.

STATEMENT OF SIGNIFICANCE/HISTORY

This unique store-front commercial building has a significant impact on Casa Grande's architectural fabric because of its unique parapet design. The vaulted form once connected to a single vaulted parapet of an adjacent building to the west which had a similar design. Earlier photographs indicate a shed-roofed wood arcade extending across the front of this and the adjacent building. The building maintains its integrity and is little changed from its 1914 appearance. It has been in continual use as a commercial building.

SOURCES OF ABOVE INFORMATION/BIBLIOGRAPHY

Casa Grande Valley Historical Society photo and history files

GEOGRAPHICAL DATA/LEGAL DESCRIPTION/VERBAL BOUNDARY DESCRIPTION

Part Block 13, Casa Grande Townsite

West 15.13' of the East 90.50' on Main Street, Block 13,
Casa Grande Townsite.

GENERAL COMMENTS/FUTURE PLANS FOR PROPERTY

ARIZONA STATE HISTORIC PROPERTY INVENTORY

HISTORIC PROPERTY NAME Period Revival House		COUNTY Pinal County	INVENTORY NO. CG-165
COMMON PROPERTY NAME Period Revival House			
PROPERTY LOCATION-STREET & NO. 905 North Lehmberg			
CITY, TOWN/VICINITY OF Casa Grande		ASSESSOR'S PARCEL NO. 506-09-032	
OWNER OF PROPERTY Jean and Robert Simmons Jr.		PHONE	
STREET & NO./P.O. BOX 905 North Lehmberg			
CITY, TOWN Casa Grande,		STATE Arizona	ZIP 85222
FORM PREPARED BY Janus Associates Inc.		DATE 9/82	
STREET & NO./P.O. BOX 2121 South Priest Suite 127		PHONE 967-7117	
CITY, TOWN Tempe,		STATE Arizona	ZIP 85282
PHOTO BY Casa Grande Survey Volunteer		DATE June 1982	
VIEW looking east			
HISTORIC USE residence			
PRESENT USE residence		ACREAGE less/one	
ARCHITECT/BUILDER			
CONSTRUCTION/MODIFICATION DATES			



PHYSICAL DESCRIPTION

This L-shaped house is a single-story stucco dwelling of Tudor Revival influence. A primary steep-sloping gabled roof has a ridge running parallel to the front facade. A steep-sloping gable intersects and projects toward the street. A small gable dormer sets toward the north side. The entire roof structure is woodshingled. A flat-roofed carport extends from the north face. Clapboard gable ends have tall narrow vents. An open-eave porch with lattice at the side protects a central entry. An awning covers a large three-light window, which appears to be a casement, centered on the south facade and a small window adjacent to the front door. Two stucco chimneys are on the east and protrude from the front roof slope adjacent to the dormer.

STATEMENT OF SIGNIFICANCE/HISTORY

This very well-maintained structure is a good example of Tudor Revival style influence in Casa Grande.

Although little is known of its history, this house was probably built during the late 1920s or early 1930s as part of the initial construction in the Evergreen Addition. This addition is largely composed of examples of period revival style houses executed in a variety of construction materials, all built within a few years. The lush landscaping surrounding the house compliments the design, enhancing its integration with the surrounding neighborhood.

SOURCES OF ABOVE INFORMATION/BIBLIOGRAPHY

GEOGRAPHICAL DATA/LEGAL DESCRIPTION/VERBAL BOUNDARY DESCRIPTION

Lot 7, Block 25, Evergreen Addition

GENERAL COMMENTS/FUTURE PLANS FOR PROPERTY

ARIZONA STATE HISTORIC PROPERTY INVENTORY

HISTORIC PROPERTY NAME Sheafe House/Casa Sahuaro	
COMMON PROPERTY NAME Casa Sahuaro Apartments	
PROPERTY LOCATION-STREET & NO. Highway 93--Old Tucson Highway	
CITY, TOWN/VICINITY OF Casa Grande	ASSESSOR'S PARCEL NO. 001B5
OWNER OF PROPERTY Robert R. Gerster	PHONE 836-9032
STREET & NO./P.O. BOX P. O. Box 426	
CITY, TOWN Casa Grande,	STATE Arizona
ZIP 85222	
FORM PREPARED BY Janus Associates Inc.	DATE 9/82
STREET & NO./P.O. BOX 2121 South Priest Suite 127	PHONE 967-7117
CITY, TOWN Tempe,	STATE Arizona
ZIP 85282	
PHOTO BY Casa Grande Survey Volunteer	DATE July 1982
VIEW looking north	
HISTORIC USE residence/resort	
PRESENT USE apartments	ACREAGE approx 8
ARCHITECT/BUILDER R. G. Smith, contractor, of Los Angeles	
CONSTRUCTION/MODIFICATION DATES 1927	

COUNTY
Pinal County

INVENTORY NO.
CG-167



PHYSICAL DESCRIPTION

This unusual random field stone one-story structure has a wood shingle open-eave gabled roof. Two transverse wings set back slightly on the west and east imitate in form but are lower in height. The west wing is detached; the east wing joins the main structure. A shed-roofed porch extends partially (rear north) along the face of the main building. A porch covers the main entry on the south, supported by slender wood corbeled posts. Six-light two-leaf French doors flank the arched front door. An arched twenty-one light window centers the east facade of the main building. Window openings are flat-arched and randomly-placed. The structure is well-maintained. Small cottages adjacent to the main building are similar in appearance and create a unified complex.

STATEMENT OF SIGNIFICANCE/HISTORY

The Sheafe House was originally built in 1927 as the winter home of an Eastern businessman. By late 1928, the home was leased to an entrepreneur and began to be used as a winter resort for wealthy Eastern tourists. Termed a ranch hotel, the small complex was named Casa Sahuaro and served as a resort for many years. The grounds encompassed guest cottages built of stone, a restaurant, a swimming pool, a dance pavilion, stables, and eventually a dairy operation. In recent years, the buildings have served as apartments. The house is a well-crafted example of stone construction.

SOURCES OF ABOVE INFORMATION/BIBLIOGRAPHY

Casa Grande Valley Historical Society newspaper index files
Interview: Jean Gerster Erickson

GEOGRAPHICAL DATA/LEGAL DESCRIPTION/VERBAL BOUNDARY DESCRIPTION

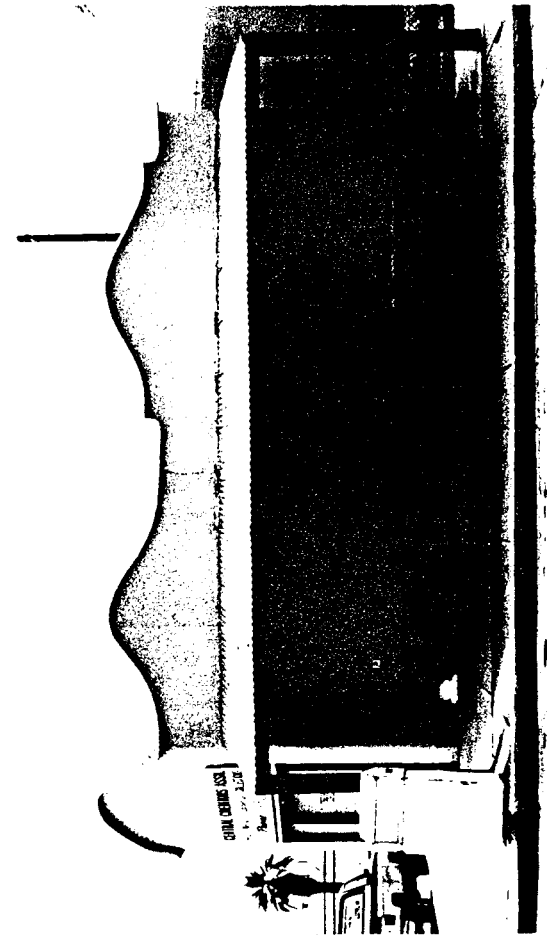
East $\frac{1}{2}$ of the NE portion, North of State Highway, Section 3, T6S, R6E,
4.75 acres

GENERAL COMMENTS/FUTURE PLANS FOR PROPERTY

ARIZONA STATE HISTORIC PROPERTY INVENTORY

HISTORIC PROPERTY NAME	
COMMON PROPERTY NAME Central Creditors Association Building	
PROPERTY LOCATION-STREET & NO. 118 North Sacaton	
CITY, TOWN/VICINITY OF Casa Grande	ASSESSOR'S PARCEL NO. 507-07-059
OWNER OF PROPERTY John Boulware	PHONE
STREET & NO./P.O. BOX Box NN	
CITY, TOWN Casa Grande,	STATE Arizona
ZIP 85222	
FORM PREPARED BY Janus Associates Inc.	DATE 9/82
STREET & NO./P.O. BOX 2121 South Priest Suite 127	PHONE 967-7117
CITY, TOWN Tempe,	STATE Arizona
ZIP 85282	
PHOTO BY Casa Grande Survey Volunteer	DATE June 1982
VIEW looking east	
HISTORIC USE commercial	
PRESENT USE commercial	ACREAGE less/one
ARCHITECT/BUILDER	
CONSTRUCTION/MODIFICATION DATES c. 1914	

COUNTY Pinal County	INVENTORY NO. CG-168
------------------------	-------------------------



PHYSICAL DESCRIPTION

This single-story stuccoed adobe is located on the southwest corner of Sacaton and First. The square plan has a diagonal corner entry with a curvilinear parapet above. The flat-roofed Mission Revival design imitates the 112 N. Sacaton building. This building has similar curvilinear parapets and a similar shed corrugated metal-roofed arcade along the Sacaton Street (west) facade. Under the arcade, double hung wood windows are symmetrically placed. The north facade has equal window treatment with a single centered vaulted parapet. A central door is infilled and stuccoed.

STATEMENT OF SIGNIFICANCE/HISTORY

As one of two adobe Mission Revival style shops on this block of Sacaton Street, this building makes a unique architectural statement in the commercial streetscene. This structure and the building at 112 N. Sacaton are the only Mission Revival style commercial storefronts in Casa Grande and as such are architecturally significant.

SOURCES OF ABOVE INFORMATION/BIBLIOGRAPHY

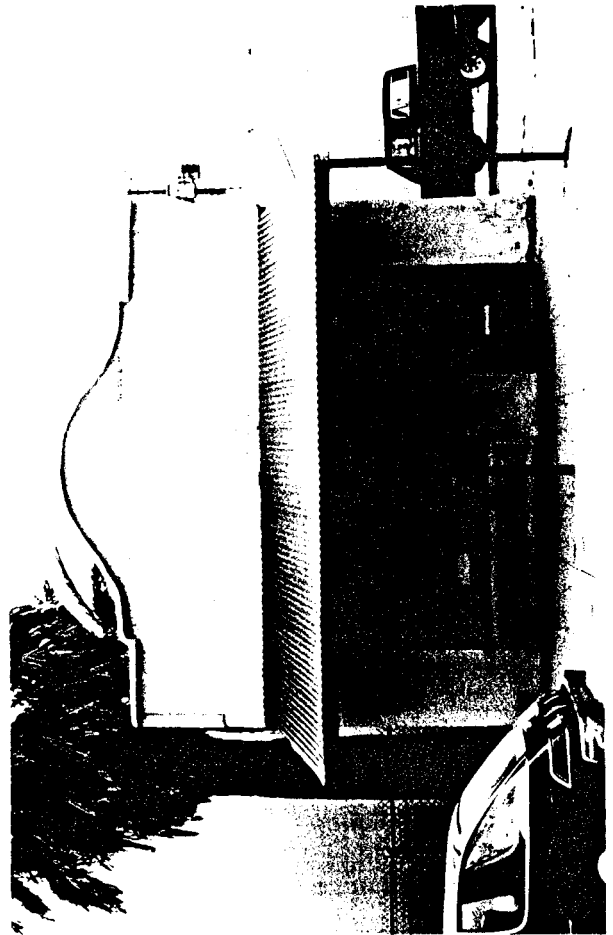
GEOGRAPHICAL DATA/LEGAL DESCRIPTION/VERBAL BOUNDARY DESCRIPTION

Lot 1, Block 12, Casa Grande Townsite

GENERAL COMMENTS/FUTURE PLANS FOR PROPERTY

ARIZONA STATE HISTORIC PROPERTY INVENTORY

HISTORIC PROPERTY NAME Ward's Variety Store		COUNTY Pinal County	INVENTORY NO. CG-169
COMMON PROPERTY NAME			
PROPERTY LOCATION-STREET & NO. 112 North Sacaton			
CITY, TOWN/VICINITY OF Casa Grande		ASSESSOR'S PARCEL NO. 507-07-059	
OWNER OF PROPERTY John Boulware		PHONE	
STREET & NO./P.O. BOX Box NN			
CITY, TOWN Casa Grande,	STATE Arizona	ZIP 85222	
FORM PREPARED BY Janus Associates Inc.		DATE 9/82	
STREET & NO./P.O. BOX 2121 South Priest Suite 127		PHONE 967-7117	
CITY, TOWN Tempe,	STATE Arizona	ZIP 85282	
PHOTO BY Casa Grande Survey Volunteer		DATE June 1982	
VIEW looking east			
HISTORIC USE commercial			
PRESENT USE unknown		ACREAGE less/one	
ARCHITECT/BUILDER			
CONSTRUCTION/MODIFICATION DATES c. 1914			



PHYSICAL DESCRIPTION

This single-story stuccoed adobe commercial building has a false front with a curvilinear parapet. It is rectangular in plan with a later porch roofed with corrugated metal extending across the front and supported by three slender columns. A large fixed-glass window with wood panels below is located on the narrow main facade along with a single-leaf door with transom. A cap defines the curvilinear shape of the parapet. Historic photos show that an identical structure was once adjacent to the south.

STATEMENT OF SIGNIFICANCE/HISTORY

This building, built around 1914, represents a unique example of early 20th century Mission style adobe commercial architecture in Casa Grande. The original business in the north bay was Ward's Variety Store. In 1925, in the same location, Ward opened a cleaning shop, and the building housed this business until 1974. Except for the later porch, the building's exterior is unmodified and its integrity remains intact. As part of a commercial block containing similar Mission Revival designs, it makes a positive contribution to Casa Grande's commercial streetscape.

SOURCES OF ABOVE INFORMATION/BIBLIOGRAPHY

Casa Grande Valley Historical Society newspaper index files
Casa Grande Valley Historical Society history and photo files

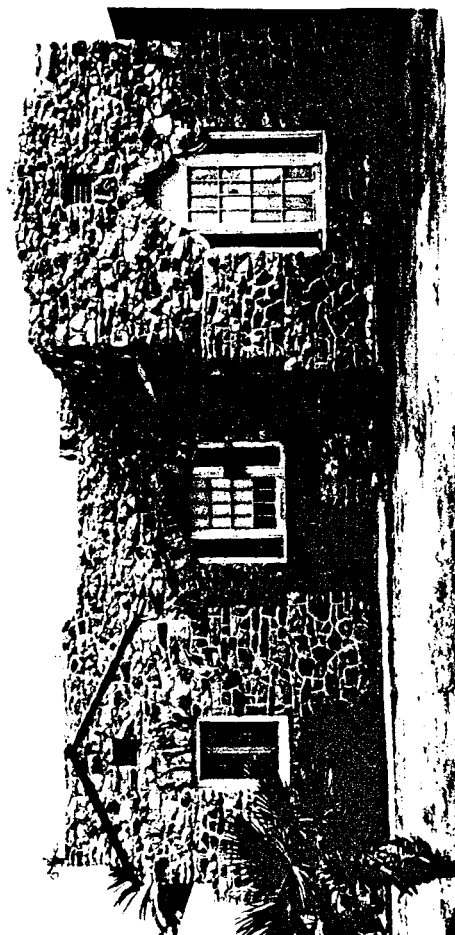
GEOGRAPHICAL DATA/LEGAL DESCRIPTION/VERBAL BOUNDARY DESCRIPTION

Lot 1, Block 12, Casa Grande Townsite

GENERAL COMMENTS/FUTURE PLANS FOR PROPERTY

ARIZONA STATE HISTORIC PROPERTY INVENTORY

HISTORIC PROPERTY NAME Vasquez House		COUNTY Pinal County	INVENTORY NO. CG-170
COMMON PROPERTY NAME Vasquez House			
PROPERTY LOCATION-STREET & NO. 114 East Florence Blvd.			
CITY, TOWN/VICINITY OF Casa Grande		ASSESSOR'S PARCEL NO. 506-07-023	
OWNER OF PROPERTY Anita Vasquez		PHONE	
STREET & NO./P.O. BOX 114 East Florence Blvd.			
CITY, TOWN Casa Grande,		STATE Arizona	ZIP 85222
FORM PREPARED BY Janus Associates Inc.		DATE 9/82	
STREET & NO./P.O. BOX 2121 South Priest Suite 127		PHONE 967-7117	
CITY, TOWN Tempe,		STATE Arizona	ZIP 85282
PHOTO BY Casa Grande Survey Volunteer		DATE June 1982	
VIEW looking north			
HISTORIC USE residence			
PRESENT USE residence		ACREAGE less/one	
ARCHITECT/BUILDER Michael Sullivan, contractor			
CONSTRUCTION/MODIFICATION DATES 1929			



PHYSICAL DESCRIPTION

This single-story structure constructed of random field stone is basically U-shaped in plan with the irregular side comprising the front (south) facade. The principal and east wings have a flat roof and parapet with a Pueblo Style influenced design. The clay-tiled wing roof intersects below the parapet. A flat-roofed stuccoed addition extends from the east rear facade. Across the rear facade extends a lower shed-roofed addition clad with horizontal siding. The main entry, sheltered by a slight shed roof, is on the west side of the protruding east wing. The west gable end front facade has a central segmental flat-arched window with twelve lights. The opposite facade has a central window with a bell-shaped arch with twenty-one lights and two eight-pane sidelights. The central recessed front facade has a large segmental arch sixteen-light window with two eight-pane sidelights. Attic vents puncture the wall above east and west front facade windows. A tapered low wall of field stone extends from the south side of the front entry door. The original structure is well-maintained.

STATEMENT OF SIGNIFICANCE/HISTORY

The Vasquez House was built in 1927 by prominent local contractor Michael Sullivan. Sullivan also built the stone Presbyterian Church and stone Woman's Club, both presently listed on the National Register. The owner of the house, Richard Vasquez, owned a hardware store in Casa Grande. The Vasquez family still occupies the house.

This well-maintained residence contributes to Casa Grande's architectural history by its association with local contractor Michael Sullivan and its Pueblo influenced design.

SOURCES OF ABOVE INFORMATION/BIBLIOGRAPHY

Interview: Anita Vasquez--September 6, 1982

GEOGRAPHICAL DATA/LEGAL DESCRIPTION/VERBAL BOUNDARY DESCRIPTION

Lots 19 and 20, Block 2, 1st Addition to Casa Grande

GENERAL COMMENTS/FUTURE PLANS FOR PROPERTY

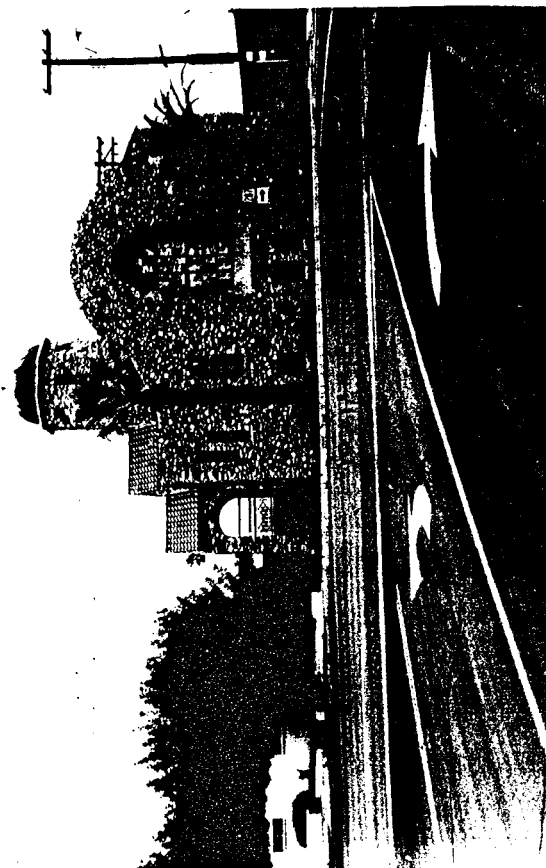
ARIZONA STATE HISTORIC PROPERTY INVENTORY

HISTORIC PROPERTY NAME Stone Church	
COMMON PROPERTY NAME	
PROPERTY LOCATION-STREET & NO. Florence Blvd. and N. Park Avenue	
CITY,TOWN/VICINITY OF Casa Grande	ASSESSOR'S PARCEL NO. 506-07-02908
OWNER OF PROPERTY Casa Grande Historical Society	PHONE 836-222
STREET & NO./P.O. BOX Florence Blvd. and N. Park Avenue	
CITY,TOWN Casa Grande,	STATE Arizona
ZIP 85222	
FORM PREPARED BY Janus Associates Inc.	DATE 9/82
STREET & NO./P.O. BOX 2121 S. Priest Suite 127	PHONE 967-7117
CITY,TOWN Tempe,	STATE Arizona
ZIP 85282	
PHOTO BY Casa Grande Survey Volunteer	DATE 1975
VIEW looking north	
HISTORIC USE Presbyterian Church	
PRESENT USE museum	ACREAGE
ARCHITECT/BUILDER Robert Orr/Architect Mike Sullivan/Contractor	
CONSTRUCTION/MODIFICATION DATES Built 1927/Modified 1946-1956	

COUNTY
Pinal County

INVENTORY NO.
CG-171

QUAD/COUNTY MAP



PHYSICAL DESCRIPTION

Located on the northeast corner of Florence Blvd. and Park Avenue, the Stone Church joined an existing Sunday School Building to form an "L". The building has a full raised basement. The rectangular plan one-story building has walls of local field stone and a gabled roof of red tile. On the southwest corner, there is a cement porch with stone arches and an arched doorway with double doors leading to a projecting vestibule. Stepped gables over the entry and vestibule are at right angles to the main roof. Over the vestibule is an octagonal belfry with a copper dome. The east and west sides of the building are broken by stone buttresses and three over one double-hung windows with flat arches. The south end of the building, facing the street, has a curved parapet and a stained glass window with a belled arch.

STATEMENT OF SIGNIFICANCE/HISTORY

The Casa Grande Stone Church, listed on the National Register of Historic Places, was built in 1927 through the efforts of a growing Presbyterian congregation. The stone church is one of two remaining large cobble buildings constructed in Casa Grande. The church was constructed by a skilled local stone mason, Mike Sullivan, and designed by Los Angeles Architect, Robert Orr. The sanctuary stained glass window was added in 1952. The expanding congregation abandoned the church in 1969 and it served as a mortuary for a few years. Its attractive and distinctive architecture and central location moved the Casa Grande Valley Historical Society to acquire the building as a museum in 1977. It remains as a landmark in Casa Grande and continues to serve the community.

SOURCES OF ABOVE INFORMATION/BIBLIOGRAPHY


National Register of Historic Places nomination, 1978, State Historic Preservation Office

GEOGRAPHICAL DATA/LEGAL DESCRIPTION/VERBAL BOUNDARY DESCRIPTION

Lots 6, 7, 8, 9, 10, Block 3, First Addition to Casa Grande

GENERAL COMMENTS/FUTURE PLANS FOR PROPERTY

ARIZONA STATE HISTORIC PROPERTY INVENTORY

HISTORIC PROPERTY NAME Woman's Club Building		COUNTY Pinal County	INVENTORY NO. CG-172	
COMMON PROPERTY NAME		QUAD/COUNTY MAP		
PROPERTY LOCATION-STREET & NO. 407 North Sacaton		CU 		
CITY, TOWN/VICINITY OF Casa Grande	ASSESSOR'S PARCEL NO. 507-07-041			
OWNER OF PROPERTY Woman's Club of Casa Grande	PHONE			
STREET & NO./P.O. BOX 407 North Sacaton				
CITY, TOWN Casa Grande,	STATE Arizona			ZIP 85222
FORM PREPARED BY Janus Associates Inc.	DATE 9/82			
STREET & NO./P.O. BOX 2121 S. Priest Suite 127	PHONE 967-7117			
CITY, TOWN Tempe,	STATE Arizona			ZIP 85282
PHOTO BY Casa Grande Survey Volunteer	DATE 1975			
VIEW looking south				
HISTORIC USE clubhouse, library, museum				
PRESENT USE clubhouse	ACREAGE			
ARCHITECT/BUILDER Mike Sullivan/Contractor Henry Jaastad/Architect				
CONSTRUCTION/MODIFICATION DATES 1924				

PHYSICAL DESCRIPTION

The plain Pueblo-Style Woman's Club Building is linked stylistically to centuries of man's adaptation to the desert. Walls are constructed of local stone gathered by club members. Roughly rectangular in plan, the one and one-half story main part of the building towers over the front wing. The three bay front facade features a covered central porch with concrete lintel and three glass doors. Window openings have flat arches and the original twelve light windows are still in place. The flat roof has a low parapet and a chimney near the south corner. A street-widening in 1960 caused the removal of the northwest corner of the building. (a section 5'8" x 8'10").

The central meeting room has a twenty-foot ceiling with cross-hatched exposed beams. A concrete block storeroom was added after World War II and measures 12'6" x 18'3".

STATEMENT OF SIGNIFICANCE/HISTORY

Listed on the National Register, the Woman's Club Building is a well-maintained example of one of two remaining large cobble buildings constructed in Casa Grande. It was built as a result of a need to use inexpensive local materials combined with the availability of a skilled local stone mason, Mike Sullivan. Designed in 1923 by renowned Tucson architect Henry O. Jaastad, the Pueblo Revival Style building was part of an early 1920s building boom in Casa Grande.

The impetus for building a Woman's Club Building began with the formation of the Casa Grande Woman's Club in 1913 and their desire for a permanent city library and meeting place. Through fund-raising efforts and contributed labor and materials, the clubhouse opened in late 1924. Since that time, the building has been in constant use by the community as a library, meeting hall, museum, and civic and social center.

SOURCES OF ABOVE INFORMATION/BIBLIOGRAPHY

1979 National Register of Historic Places nomination, State Historic Preservation Office, Phoenix, Arizona

GEOGRAPHICAL DATA/LEGAL DESCRIPTION/VERBAL BOUNDARY DESCRIPTION

Lots 10, 16, 17, 18, 19, 20 and E 5.9' of Lot 15, lying south of Florence Blvd., at the northwest corner of the intersection of Sacaton Street and Third Street, Block 7, Casa Grande Townsite

GENERAL COMMENTS/FUTURE PLANS FOR PROPERTY

ARIZONA STATE HISTORIC PROPERTY INVENTORY

HISTORIC PROPERTY NAME Main Street Commercial District		COUNTY Pinal County	INVENTORY NO. CG-173
COMMON PROPERTY NAME Archeological site		QUAD/COUNTY MAP	
PROPERTY LOCATION-STREET & NO. Block 13, Main Street		CURRENT BLACK & WHITE PHOTOGRAPH	
CITY, TOWN/VICINITY OF Casa Grande	ASSESSOR'S PARCEL NO. various		
OWNER OF PROPERTY various	PHONE		
STREET & NO./P.O. BOX			
CITY, TOWN	STATE ZIP		
FORM PREPARED BY Janus Associates Inc.	DATE 9/82		
STREET & NO./P.O. BOX 2121 S. Priest Suite 127	PHONE 967-7117		
CITY, TOWN Tempe,	STATE ZIP Arizona 85282		
PHOTO BY unavailable	DATE		
VIEW			
HISTORIC USE Commercial District			
PRESENT USE vacant lots	ACREAGE		
ARCHITECT/BUILDER			
CONSTRUCTION/MODIFICATION DATES			

PHYSICAL DESCRIPTION

The lots in Block 13 fronting on Main Street included in this archeological site are all cleared of buildings. The block has been subjected to repeated building and clearing episodes and is highly debris-strewn. Existing records substantiate the previous existence of buildings of varying types and construction. Evidence of these buildings exists on the site as building foundations, depressions, and construction materials. The site is reasonably level, covered with dirt, and contains a large quantity of artifactual materials. Sidewalks paralleling Main Street are intact.

STATEMENT OF SIGNIFICANCE/HISTORY

The majority of the south half of Block 13 exists as one of the most significant archeological sites in Casa Grande and possesses a high potential for yielding information important to the town's history. This area was Casa Grande's first business district and was in active use from the 1880's through the 1950's. A series of construction and destruction episodes on this streetscape have left a deep deposit of construction debris and material artifacts. Although most of the activity in this area focused on business ventures, daily human behavior formed an integral component of the artifactual remains. The site is completely cleared of structures but evidence of buildings remains. As one of the oldest and most active areas in Casa Grande, the site promises to be highly productive in terms of information relevant to early business activities and human behavior over a long period in the city's history.

SOURCES OF ABOVE INFORMATION/BIBLIOGRAPHY

Casa Grande Valley Historical Society newspaper index files
Casa Grande Valley Historical Society history and photo files

GEOGRAPHICAL DATA/LEGAL DESCRIPTION/VERBAL BOUNDARY DESCRIPTION

Lots 13, 14, 15, 16, west $\frac{1}{2}$ of 17, and 21, Block 13, Casa Grande
Townsite

GENERAL COMMENTS/FUTURE PLANS FOR PROPERTY