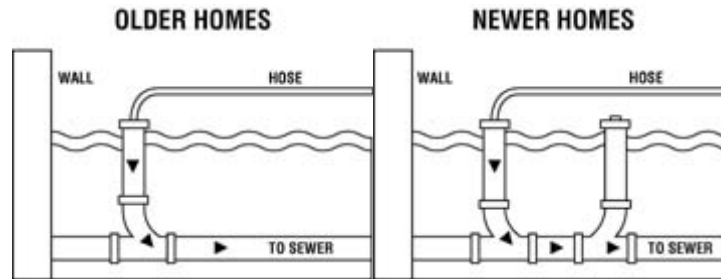


Pool Demolition Requirements

Prior to demolition, pools shall be drained by discharging to the city sewer via the home's sewer cleanout. Water should not be discharged into a street or roadway. The sewer cleanout is typically a three- or four-inch black pipe about level with the landscaping, typically located close to the home. It may have a black cap, with a raised square nut or a recessed slot, which can be unscrewed, providing access for the pool water disposal. In a newer home, you may find that there are two clean-out pipes; In this case, the one closer to the home is the appropriate discharge point.



When removing a pool, there are two options for how to proceed with the pool's demolition:

Pool filling in (partial removal) or Complete removal.

Pool Filling In (Partial Removal)

1. A minimum of one 24" x 24" sized hole is required at the bottom of the deep end of the pool for drainage. Site inspection of the removal hole is required.
2. Pool walls shall be removed to a minimum depth of 18 inches below the finished grade. Rubble may be placed in the bottom as granular backfill. Backfill to finished grade with granular fill, soil, etc.
 - No other debris including landscaping trimmings, yard waste, etc. will be allowed as backfill materials to insure proper drainage.
 - The area of the partially removed pool will remain non-buildable. In order to build in this area, a geotechnical investigation will be required.
3. Removal of all above ground pool plumbing including pumps and heaters is required.
4. When the electrical sub-panel is removed, the electrical sub feed conductors shall be removed back to the electric service supply location.

Complete Removal

1. Pool is completely demolished and all materials are removed and hauled away.
2. The area is then filled with soil and/or gravel under the supervision of a geotechnical engineer or their representative who will observe and/or test placement and compaction of the backfill.
 - Observation and testing reports, including a final letter from the engineer, must be provided to the building inspector.
 - The area of the removed pool will be permitted for future construction in accordance with the requirements of the final letter provided by the engineer.
3. Removal of all above ground pool plumbing including pumps and heaters is required.
4. When the electrical sub-panel is removed, the electrical sub feed conductors shall be removed back to the electric service supply location.